

Human MFG-E8 / lactadherin / MFGE8 (His Tag) recombinant protein



Catalog Number: 500163

General Information

Gene Name Synonym

Breast epithelial antigen BA46; HMFG; MFGM;
Milk fat globule-EGF factor 8; SED1; Lactadherin
short form; Medin

Protein Construction

A DNA sequence encoding the human MFGE8
isoform 1 (Q08431-1) (Met 1-Cys 387) was fused
with a polyhistidine tag at the C-terminus.

Organism

Human

Expression Host

Baculovirus-Insect Cells

QC Testing

Purity

> 88 % as determined by SDS-PAGE

Endotoxin

< 1.0 EU per μg of the protein as determined by
the LAL method

Stability

Samples are stable for up to twelve months from
date of receipt at -70°C

Predicted N terminal

Leu 24

Molecular Mass

The secreted recombinant human MFGE8
comprises 374 amino acids and has a predicted
molecular mass of 42 kDa. The apparent
molecular mass of rh MFGE8 is approximately 45
kDa in SDS-PAGE under reducing conditions.

Formulation

Lyophilized from sterile 20mM Tris, 500mM NaCl,
pH 7.4, 10% gly

1. 5 % trehalose and mannitol are added as
protectants before lyophilization.
2. Please contact us for any concerns or special
requirements.

Usage Guide

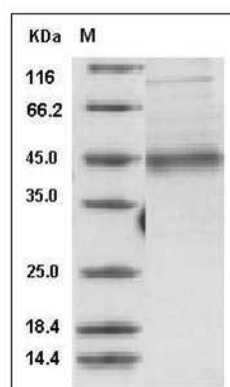
Storage

Store it under sterile conditions at -20°C to -80°C .
It is recommended that the protein be aliquoted
for optimal storage. Avoid repeated freeze-thaw
cycles.

Reconstitution

Adding sterile water, prepare a stock solution of
0.25 mg/ml. Concentration is measured by UV-Vis.

SDS-PAGE



Human MFG-E8 / lactadherin / MFGE8 Protein
(His Tag) SDS-PAGE