

# Human Cadherin-6/CDH6 (His Tag) recombinant protein



Catalog Number: 500156

## General Information

### Gene Name Synonym

Kidney cadherin

### Protein Construction

A DNA sequence encoding the extracellular domain of human CDH6 (AAH00019.1) precursor (Met 1-Ala 615) was fused with a polyhistidine tag at the C-terminus.

### Organism

Human

### Expression Host

Human Cells

## QC Testing

### Purity

> 85 % as determined by SDS-PAGE

### Endotoxin

< 1.0 EU per  $\mu$ g of the protein as determined by the LAL method

### Stability

Samples are stable for up to twelve months from date of receipt at -70°C

### Predicted N terminal

Thr 19 & Ser 54

### Molecular Mass

The pro form of recombinant human CDH6

consists of 609 amino acids and predicts a molecular mass of 68 kDa. In SDS-PAGE under reducing conditions, it migrates with the apparent molecular mass of 90-100 kDa due to glycosylation.

### Formulation

Lyophilized from sterile PBS, pH 7.4

1. 5 % trehalose and mannitol are added as protectants before lyophilization.
2. Please contact us for any concerns or special requirements.

## Usage Guide

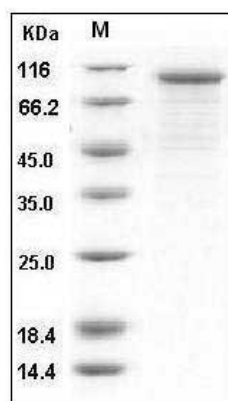
### Storage

Store it under sterile conditions at -20°C to -80°C. It is recommended that the protein be aliquoted for optimal storage. Avoid repeated freeze-thaw cycles.

### Reconstitution

Adding sterile water, prepare a stock solution of 0.25 mg/ml. Concentration is measured by UV-Vis.

### SDS-PAGE



Human Cadherin-6 / CDH6 Protein (His Tag) SDS-PAGE