

Human RGMA (His Tag) recombinant protein



Catalog Number: 500040

General Information

Gene Name Synonym:

RGM domain family member A

Protein Construction:

A DNA sequence encoding the human RGMA isoform 3 (NP_064596.2) (Met 1-Gly 422), without the C-terminal pro peptide, was fused with a polyhistidine tag at the C-terminus.

Source: Human

Expression Host: Human Cells

QC Testing

Activity:

Purity:

> 90 % as determined by SDS-PAGE

Endotoxin:

< 1.0 EU per μg of the protein as determined by the LAL method

Stability:

Samples are stable for up to twelve months from date of receipt at -70°C

Predicted N terminal:

Cys 48

Molecular Mass:

The secreted recombinant human RGMA consists of 386 amino acids and has a predicted molecular mass of 43 kDa. As a result of glycosylation and

proteolytic processing, rhRGMA migrates mainly as an approximately 36 kDa in SDS-PAGE corresponding to the mature segment under reducing conditions, and the un-cleaved pro form can also be seen.

Formulation:

Lyophilized from sterile PBS, pH 7.4

1. 5 % trehalose and mannitol are added as protectants before lyophilization.

2. Please contact us for any concerns or special requirements.

Usage Guide

Storage:

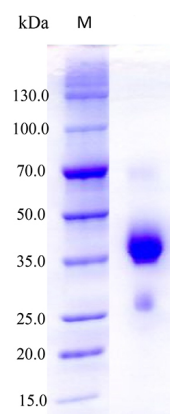
Store it under sterile conditions at -20°C to -80°C .

It is recommended that the protein be aliquoted for optimal storage. Avoid repeated freeze-thaw cycles.

Reconstitution:

Adding sterile water, prepare a stock solution of 0.25 mg/ml. Concentration is measured by UV-Vis.

SDS-PAGE:



Human RGMA Protein (His Tag) SDS-PAGE