

Human GYPA / CD235a / Glycophorin A (His Tag) recombinant protein



Catalog Number: 500017

General Information

Gene Name Synonym:

MN sialoglycoprotein; PAS-2; Sialoglycoprotein alpha

Protein Construction:

A DNA sequence encoding the human GYPA (P02724) (Met1-Glu91) was expressed with a C-terminal polyhistidine tag.

Source: Human

Expression Host: Human Cells

QC Testing

Activity:

Purity:

(79.9+19.9) % as determined by SDS-PAGE

Endotoxin:

< 1.0 EU per µg of the protein as determined by the LAL method

Stability:

Samples are stable for up to twelve months from date of receipt at -70°C

Predicted N terminal:

Ser 20

Molecular Mass:

The recombinant human GYPA comprises 83 amino acids and has a predicted molecular mass

of 9.4 kDa. The apparent molecular mass of the protein is approximately 35-45 and 20 kDa in SDS-PAGE under reducing conditions due to glycosylation.

Formulation:

Lyophilized from sterile PBS, pH 7.4.

1. 5 % trehalose and mannitol are added as protectants before lyophilization.

2. Please contact us for any concerns or special requirements.

Usage Guide

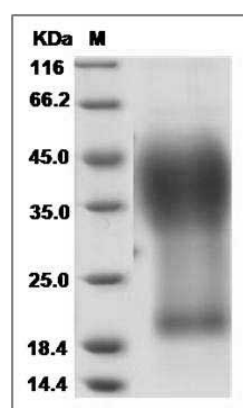
Storage:

Store it under sterile conditions at -20°C to -80°C. It is recommended that the protein be aliquoted for optimal storage. Avoid repeated freeze-thaw cycles.

Reconstitution:

Adding sterile water, prepare a stock solution of 0.25 mg/ml. Concentration is measured by UV-Vis.

SDS-PAGE:



Human GYPA / CD235a / Glycophorin A Protein (His Tag) SDS-PAGE