

# Anti-CMTM6 Rabbit antibody



Catalog Number: 166797

## Product name

Anti-CMTM6 Rabbit antibody

## Specificity

Human, Mouse

## Antibody description

CMTM6 Rabbit polyclonal antibody

## Preparation

Antigen: Synthetic peptide of human CMTM6

## Formulation

-20°C, pH7.4 PBS, 0.05% NaN<sub>3</sub>, 40% Glycerol

## Storage

Store at 4°C short term. Store at -20°C long term.  
Avoid freeze / thaw cycle.

## Clonality

Polyclonal

## Ig Type

Rabbit IgG

## Applications

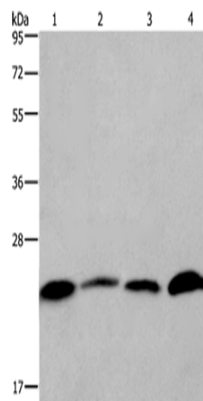
ELISA, WB, IHC-P

## Dilutions

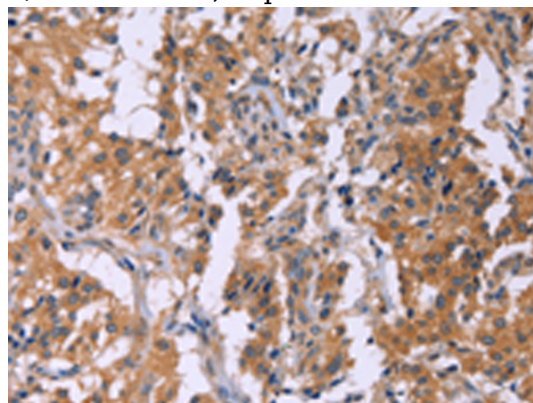
WB: 1/500-1/2000

IHC: 1/50-1/200

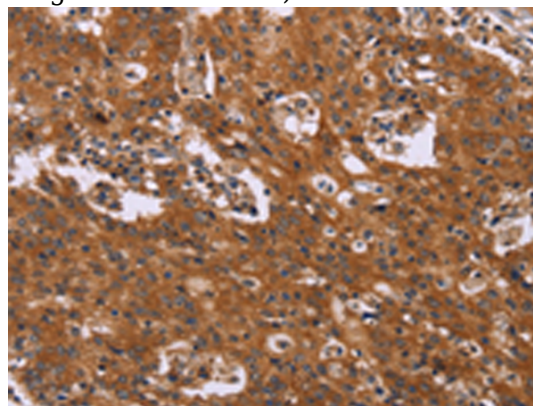
## Validations



Gel: 10%SDS-PAGE, Lysate: 40 µg, Lane 1-4: Human placenta tissue, Human testis tissue, HeLa cells, Raji cells, Primary antibody: 166797(CMTM6 Antibody) at dilution 1/700, Secondary antibody: Goat anti rabbit IgG at 1/8000 dilution, Exposure time: 3 minutes



The image is immunohistochemistry of paraffin-embedded Human thyroid cancer tissue using 166797(CMTM6 Antibody) at dilution 1/40, on the right is treated with synthetic peptide. (Original magnification: ×200)



The image is immunohistochemistry of paraffin-embedded Human gastric cancer tissue using

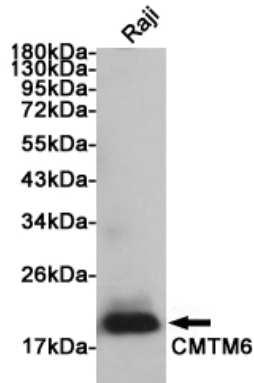
# Anti-CMTM6 Rabbit antibody

Catalog Number: 166797

---

166797(CMTM6 Antibody) at dilution 1/40, on the right is treated with synthetic peptide. (Original

Western blot analysis of extract from Raji cells using CMTM6 Rabbit pAb at 1:1000 dilution. Predicted band size: 20kDa. Observed band size: 20kDa.



magnification: ×200)