

Human CMA1 (His Tag) recombinant protein



Catalog Number: 502797

General Information

Gene Name Synonym

Alpha-chymase; Mast cell protease I

Protein Construction

A DNA sequence encoding the human CMA1 (P23946) (Met 1-Asn 247) was fused with a polyhistidine tag at the C-terminus.

Organism

Human

Expression Host

Baculovirus-Insect Cells

QC Testing

Purity

> 92 % as determined by SDS-PAGE

Endotoxin

< 1.0 EU per μg of the protein as determined by the LAL method

Stability

Samples are stable for up to twelve months from date of receipt at -70°C

Predicted N terminal

Gly 20

Molecular Mass

The secreted recombinant human CMA1 consists

of 238 amino acids and predicts a molecular mass of 26.6 kDa. It migrates as an approximately 33 kDa band in SDS-PAGE under reducing conditions.

Formulation

Lyophilized from sterile 20mM Tris, 500mM NaCl, pH 7.4, 10% gly

1. 5 % trehalose and mannitol are added as protectants before lyophilization.

2. Please contact us for any concerns or special requirements.

Usage Guide

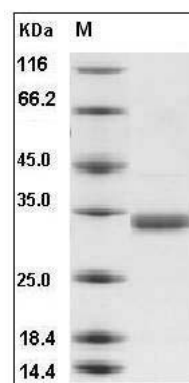
Storage

Store it under sterile conditions at -20°C to -80°C . It is recommended that the protein be aliquoted for optimal storage. Avoid repeated freeze-thaw cycles.

Reconstitution

Adding sterile water, prepare a stock solution of 0.25 mg/ml. Concentration is measured by UV-Vis.

SDS-PAGE



Human CMA1 / Chymase 1 Protein (His Tag) SDS-PAGE