

# Anti-Syntrophin alpha 1 Rabbit antibody



Catalog Number: 167397

## Product name

Anti-Syntrophin alpha 1 Rabbit antibody

WB: 1/1000-1/5000

IHC: 1/50

## Specificity

Human, Mouse

ICC/IF: 1/50

FC: 1/50

## Antibody description

Syntrophin alpha 1 Rabbit polyclonal antibody

## Preparation

Antigen: A synthetic peptide of human Syntrophin alpha 1

## Formulation

Supplied in 50nM Tris-Glycine(pH 7.4), 0.15M NaCl, 40%Glycerol, 0.01% sodium azide and 0.05% BSA.

## Storage

Store at -20°C. Stable for 12 months from date of receipt.

## Clonality

Polyclonal

## Ig Type

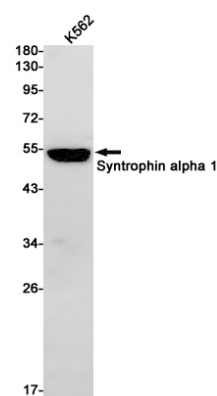
Rabbit IgG

## Applications

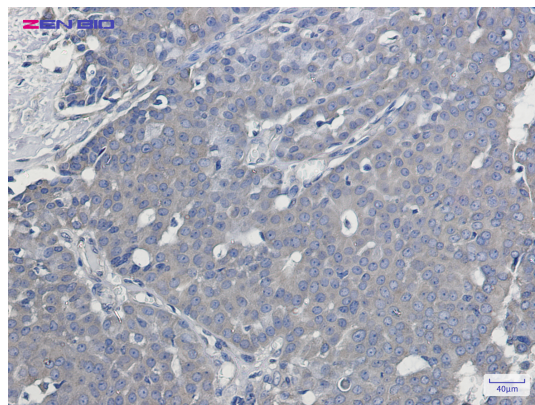
WB, IHC-P, ICC/IF, FC

## Dilutions

## Validations



Western blot detection of Syntrophin alpha 1 in K562 cell lysates using Syntrophin alpha 1 Rabbit pAb(1:1000 diluted). Predicted band size:54kDa.Observed band size:54kDa.



Immunohistochemistry of Syntrophin alpha 1 in paraffin-embedded Human breast cancer tissue using Syntrophin alpha 1 Rabbit pAb at dilution 1/50