

Anti-SLC30A9 antibody



Catalog Number: 176397

Product name

Anti-SLC30A9 antibody

Specificity

Human, Mouse, Rat

Antibody description

Rabbit polyclonal antibody to SLC30A9

Preparation

This antigen of this antibody was the antiserum was produced against synthesized peptide derived from human slc30a9. aa range:181-230

Formulation

Liquid, Liquid in PBS containing 50% glycerol, 0.5% BSA and 0.02% sodium azide.

Storage

Store at +4°C after thawing. Aliquot store at -20°C or -80°C. Avoid repeated freeze / thaw cycles.

Clonality

Polyclonal

Ig Type

Rabbit IgG

Applications

WB

Dilutions

WB: 1:500-1:2000

Validations

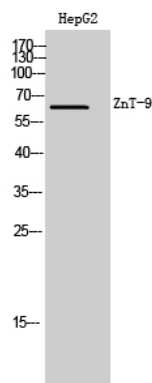


Fig1.; Western Blot analysis of HepG2 cells using ZnT-9 Polyclonal Antibody. Secondary antibody (catalog#: HA1001) was diluted at 1:20000