

ER antibody

Catalog Number: 110397

Product name

ER antibody

WB: 1:500-1:5000

IHC: 1:10-1:100

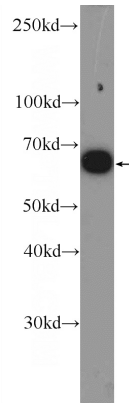
Specificity

Human, Mouse, Rat; other species not tested.

Validations

Antibody description

ER Rabbit Polyclonal antibody. Positive WB detected in MCF-7 cells, HeLa cells, MCF7 cells, mouse testis tissue, NIH/3T3 cells, rat testis tissue. Positive IHC detected in human breast cancer tissue, human cervical cancer tissue, human cervix tissue. Observed molecular weight by Western-blot: 65-70 kDa



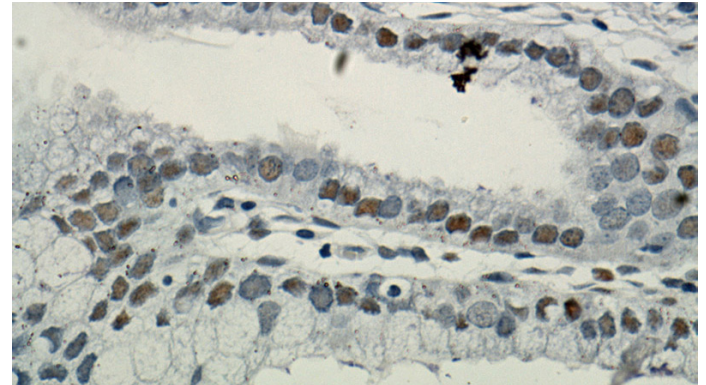
Preparation

This antibody was obtained by immunization of ER recombinant protein (Accession Number: XM_017010381). Purification method: Antigen affinity purified.

MCF-7 cells were subjected to SDS PAGE followed by western blot with Catalog No:110397(ER Antibody) at dilution of 1:1000

Formulation

PBS with 0.1% sodium azide and 50% glycerol pH 7.3.



Storage

Store at -20°C. DO NOT ALIQUOT

Immunohistochemical of paraffin-embedded human cervix using Catalog No:110397(ESR1 antibody) at dilution of 1:50 (under 40x lens). Heat mediated antigen retrieved with Citric acid buffer,

Clonality

Polyclonal

Ig Type

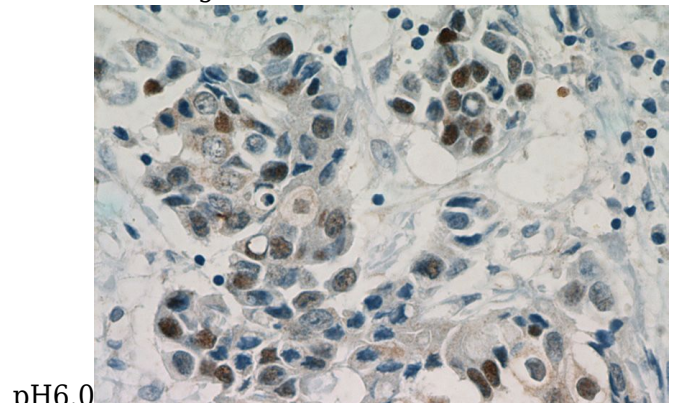
Rabbit IgG

Applications

ELISA, IHC, WB

Dilutions

Recommended Dilution:



Immunohistochemical of paraffin-embedded

ER antibody



Catalog Number: 110397

human breast cancer using Catalog
No:110397(ESR1 antibody) at dilution of 1:25

(under 40x lens). Heat mediated antigen retrieved
with Citric acid buffer, pH6.0