

# CYP2S1 antibody



Catalog Number: 109697

## Product name

CYP2S1 antibody

## Specificity

Human, Mouse; other species not tested.

## Antibody description

CYP2S1 Rabbit Polyclonal antibody. Positive WB detected in COLO 320 cells, mouse kidney tissue. Positive IF detected in Hela cells. Observed molecular weight by Western-blot: 50kd

## Preparation

This antibody was obtained by immunization of CYP2S1 recombinant protein (Accession Number: NM\_030622). Purification method: Antigen affinity purified.

## Formulation

PBS with 0.02% sodium azide and 50% glycerol pH 7.3.

## Storage

Store at -20°C. DO NOT ALIQUOT

## Clonality

Polyclonal

## Ig Type

Rabbit IgG

## Applications

ELISA, WB, IF

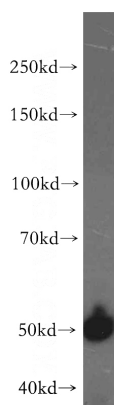
## Dilutions

Recommended Dilution:

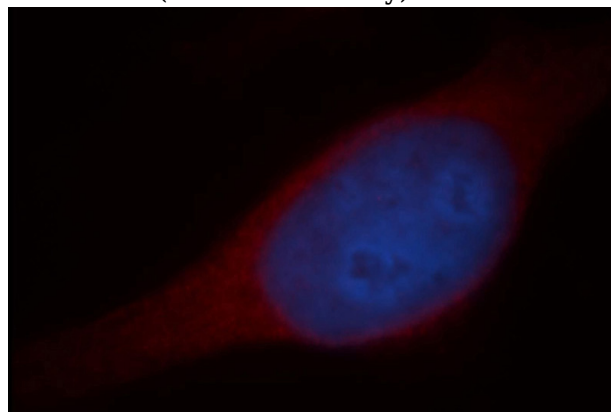
WB: 1:1000-1:10000

IF: 1:10-1:100

## Validations



COLO 320 cells were subjected to SDS PAGE followed by western blot with Catalog No:109697(CYP2S1 antibody) at dilution of 1:500



Immunofluorescent analysis of Hela cells, using CYP2S1 antibody Catalog No:109697 at 1:25 dilution and Rhodamine-labeled goat anti-rabbit IgG (red). Blue pseudocolor = DAPI (fluorescent DNA dye).