

# Anti-PSME2 / PA28b antibody



Catalog Number: 106697

## Product name

Anti-PSME2 / PA28b antibody

## Immunogen

[Human PSME2 / PA28b \(His Tag\) recombinant protein](#)

## Specificity

Human PSME2 / PA28b

## Antibody description

Rabbit polyclonal to PSME2 / PA28b

## Preparation

Produced in rabbits immunized with purified, recombinant Human PSME2 / PA28b (rh PSME2 / PA28b; PSME2\_HUMAN; Met1-Tyr239). PSME2 / PA28b specific IgG was purified by Human PSME2 / PA28b affinity chromatography.

## Formulation

0.2 µm filtered solution in PBS

## Storage

This antibody can be stored at 2°C-8°C for one month without detectable loss of activity. Antibody products are stable for twelve months from date of receipt when stored at -20°C to -80°C.

Preservative-Free.

Sodium azide is recommended to avoid contamination (final concentration 0.05%-0.1%). It is toxic to cells and should be disposed of properly. Avoid repeated freeze-thaw cycles.

## Clonality

Polyclonal

## Ig Type

Rabbit IgG

## Applications

ELISA, WB, IP

## Dilutions

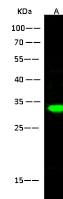
WB: 2-10 µg/ml

ELISA: 0.1-0.2 µg/mL

This antibody can be used at 0.1-0.2 µg/mL with the appropriate secondary reagents to detect Human PSME2 / PA28b. The detection limit for Human PSME2 / PA28b is < 0.039 ng/well.

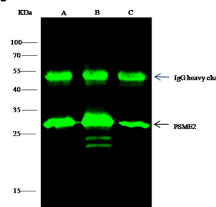
IP: 0.5-2 µg/ml of lysate

## Validations



Lanes	A
Items	
Sample (whole cell lysate)	Hela
Sample volume (µg/lane)	30
Gel	13% SDS-PAGE reducing gel
Recommended Concentration	2-10 µg/ml
Secondary Antibody	Dylight 800 labeled Antibody to Rabbit IgG (H+L), at 1:5000 dilution
Developed using	Odyssey imaging system
Explanation	Predicted band size - 26 kDa Observed band size - 31 kDa

## PSME2 / PA28b Antibody, Rabbit PAb, Antigen Affinity Purified, Western blot



Lanes	A	B	C
Items			
Sample (whole cell lysate)	Hela	HepG2	293T
Sample quantity	0.5 mg		
IP antibody quantity	2 µg		
Protein G agarose	15 µl of 50% Protein G Agarose		
Gel	13% SDS-PAGE reducing gel		
Primary antibody	PSME2 antibody at 5 µg/ml		
Secondary antibody	Dylight 800 labeled antibody to rabbit IgG (H+L), at 1:5000 dilution.		

## PSME2 / PA28b Antibody, Rabbit PAb, Antigen Affinity Purified, Immunoprecipitation