

Anti-KIRREL3/NEPH2 antibody



Catalog Number: 103697

Product name

Anti-KIRREL3/NEPH2 antibody

Immunogen

[Mouse KIRREL3/NEPH2 \(His Tag\) recombinant protein](#)

Specificity

Mouse KIRREL3 / NEPH2

Antibody description

Rabbit polyclonal to KIRREL3/NEPH2

Preparation

Produced in rabbits immunized with purified, recombinant Mouse KIRREL3 / NEPH2 (rM KIRREL3 / NEPH2; Q8BR86-1; Met 1-Ala 535). KIRREL3 / NEPH2 specific IgG was purified by Mouse KIRREL3 / NEPH2 affinity chromatography.

Formulation

0.2 µm filtered solution in PBS with 5% trehalose

Storage

This antibody can be stored at 2°C-8°C for one month without detectable loss of activity. Antibody products are stable for twelve months from date of receipt when stored at -20°C to -80°C. Preservative-Free.

Sodium azide is recommended to avoid contamination (final concentration 0.05%-0.1%). It is toxic to cells and should be disposed of properly. Avoid repeated freeze-thaw cycles.

Clonality

Polyclonal

Ig Type

Rabbit IgG

Applications

ELISA, IHC-P

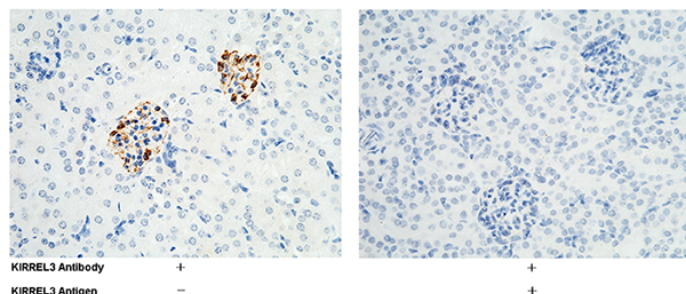
Dilutions

ELISA: 0.1-0.2 µg/mL

This antibody can be used at 0.1-0.2 µg/mL with the appropriate secondary reagents to detect Mouse KIRREL3. The detection limit for Mouse KIRREL3 is approximately 0.039 ng/well.

IHC-P: 0.1-2 µg/mL

Validations



KIRREL3 / NEPH2 Antibody, Rabbit PAb, Antigen Affinity Purified, Immunohistochemistry

Immunochemical staining of mouse KIRREL3 in mouse kidney with rabbit polyclonal antibody (0.2 µg/mL, formalin-fixed paraffin embedded sections). The left panel: tissue incubated with primary antibody; The right panel: tissue incubated with the mixture of primary antibody and antigen (recombinant protein).