

Anti-SETD7/SET7/9 antibody



Catalog Number: 100697

Product name

Anti-SETD7/SET7/9 antibody

Immunogen

[Human SETD7/SET7/9 \(His Tag\) recombinant protein](#)

Specificity

Human SETD7 / SET7 / 9

Antibody description

Mouse monoclonal to SETD7/SET7/9

Preparation

This antibody was produced from a hybridoma resulting from the fusion of a mouse myeloma with B cells obtained from a mouse immunized with purified, recombinant Human SETD7 / SET7 / 9 (rh SETD7 / SET7 / 9; NP_085151.1; Asp2-Lys366). The IgG fraction of the cell culture supernatant was purified by Protein A affinity chromatography.

Formulation

0.2 µm filtered solution in PBS with 5% treha

Storage

This antibody can be stored at 2°C-8°C for one month without detectable loss of activity. Antibody products are stable for twelve months from date of

receipt when stored at -20°C to -80°C. Preservative-Free.

Sodium azide is recommended to avoid contamination (final concentration 0.05%-0.1%). It is toxic to cells and should be disposed of properly. Avoid repeated freeze-thaw cycles.

Clonality

Monoclonal

Ig Type

Mouse IgG1

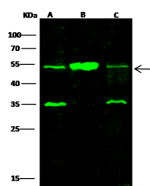
Applications

WB

Dilutions

WB: 10-20µg/ml

Validations



Lanes	A	B	C
Items			
Sample [whole cell lysate]	Hela	MCF7	NIH3T3
Sample Volume [µg/lane]	60	60	60
Get	13% SDS-PAGE-reducing gel		
Recommended Concentration	10-20µg/ml		
Secondary Antibody	Dylight 800-labeled Antibody To MouseIgG (H+L), at 1:7500 dilution.		
Explanation	Developed using Odyssey imaging system. Predicted band size : 41 kDa Observed band size : 53 kDa Additional bands at : 35 kDa (We are unsure as to the identity of these extra bands. They are possible non-specific bindings).		

SETD7 / SET7 / 9 Antibody, Mouse MAb, Western blot