

# SLC10A3 antibody



Catalog Number: 115297

## Product name

SLC10A3 antibody

IHC: 1:20-1:200

IF: 1:10-1:100

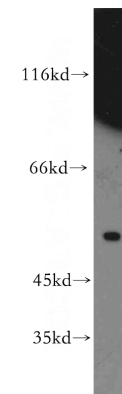
## Specificity

Human, Mouse; other species not tested.

## Validations

## Antibody description

SLC10A3 Rabbit Polyclonal antibody. Positive WB detected in mouse liver tissue, RAW264.7 cells. Positive IF detected in Hela cells. Positive IHC detected in human pancreas tissue. Observed molecular weight by Western-blot: 50kd,44kd



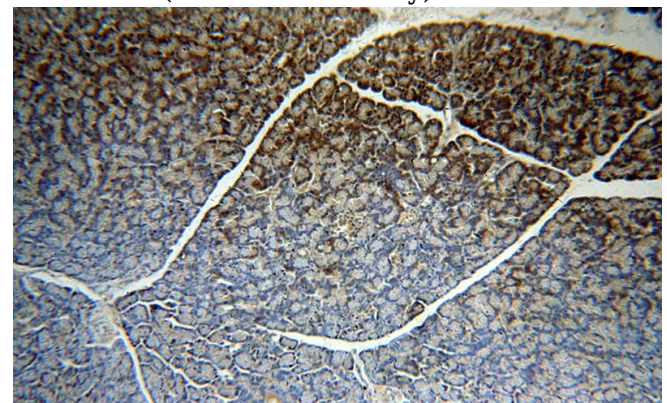
## Preparation

This antibody was obtained by immunization of SLC10A3 recombinant protein (Accession Number: NM\_001142391). Purification method: Antigen affinity purified.

mouse liver tissue were subjected to SDS PAGE followed by western blot with Catalog No:115297(SLC10A3 antibody) at dilution of 1:500

## Formulation

PBS with 0.02% sodium azide and 50% glycerol pH 7.3.



## Storage

Store at -20°C. DO NOT ALIQUOT

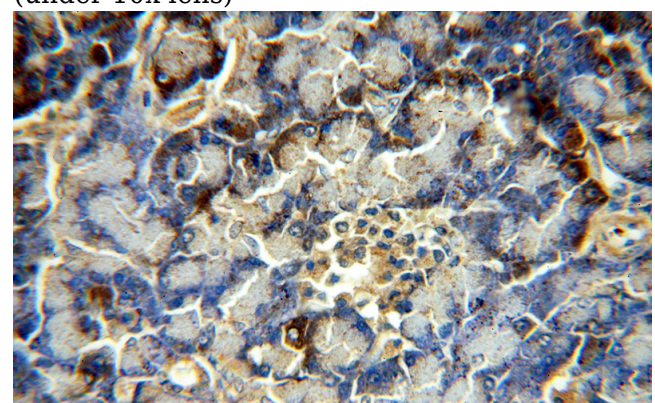
## Clonality

Polyclonal

Immunohistochemical of paraffin-embedded human pancreas using Catalog No:115297(SLC10A3 antibody) at dilution of 1:50 (under 10x lens)

## Ig Type

Rabbit IgG



## Applications

ELISA, WB, IHC, IF

## Dilutions

Recommended Dilution:

WB: 1:200-1:2000

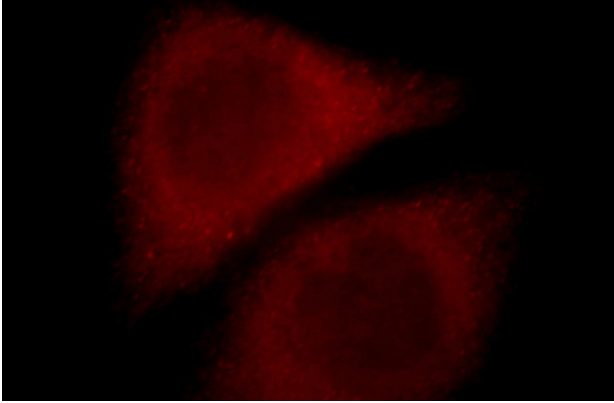
Immunohistochemical of paraffin-embedded

# SLC10A3 antibody

Catalog Number: 115297

---

human pancreas using Catalog  
No:115297(SLC10A3 antibody) at dilution of 1:50  
(under 40x lens)



Immunofluorescent analysis of HeLa cells, using  
SLC10A3 antibody Catalog No:115297 at 1:25  
dilution and Rhodamine-labeled goat anti-rabbit  
IgG (red).