

# Anti-KLK11/Kallikrein 11 antibody



Catalog Number: 102297

## Product name

Anti-KLK11/Kallikrein 11 antibody

## Immunogen

[Human KLK11/Kallikrein 11 \(His Tag\) recombinant protein](#)

## Specificity

Human KLK-11 / Kallikrein 11

## Antibody description

Rabbit monoclonal to KLK11/Kallikrein 11

## Preparation

This antibody was obtained from a rabbit immunized with purified, recombinant Human KLK11 / Kallikrein 11 (rh KLK-11; Met 1-Asn 250; NP\_006844.1).

## Formulation

0.2  $\mu$ m filtered solution in PBS with 5% trehalose

## Storage

This antibody can be stored at 2°C-8°C for one month without detectable loss of activity. Antibody products are stable for twelve months from date of receipt when stored at -20°C to -80°C.

Preservative-Free.

Sodium azide is recommended to avoid contamination (final concentration 0.05%-0.1%). It is toxic to cells and should be disposed of properly. Avoid repeated freeze-thaw cycles.

## Clonality

Monoclonal

## Ig Type

Rabbit IgG

## Applications

ELISA, WB

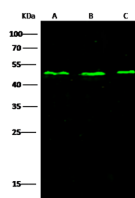
## Dilutions

WB: 10-20  $\mu$ g/mL

ELISA: 0.1-0.2  $\mu$ g/mL

This antibody can be used at 0.1-0.2  $\mu$ g/mL with the appropriate secondary reagents to detect Human KLK11. The detection limit for Human KLK11 is 0.0049 ng/well.

## Validations



Items	Lanes		
	A	B	C
Sample (whole cell lysate)	A549	HeLa	U87MG
Sample Volume ( $\mu$ g/lane)	30		
Gel	13% SDS-PAGE reducing gel		
Recommended Concentration	10-20 $\mu$ g/ml		
Secondary Antibody	Dylight 800-labeled Antibody To Rabbit IgG (H+L), at 1:5000 dilution.		

KLK-11 / Kallikrein-11 Antibody, Rabbit MAb, Western blot