

Anti-LILRA2 antibody



Catalog Number: 142297

Product name

Anti-LILRA2 antibody

Specificity

Human LILRA2

Antibody description

Rabbit Polyclonal to Human LILRA2

Preparation

Produced in rabbits immunized with a synthetic peptide corresponding to the N-terminus of the Human LILRA2, and purified by antigen affinity chromatography.

Formulation

0.2 µm filtered solution in PBS

Storage

This antibody can be stored at 2°C-8°C for one month without detectable loss of activity. Antibody products are stable for twelve months from date of receipt when stored at -20°C to -80°C.

Preservative-Free.

Sodium azide is recommended to avoid contamination (final concentration 0.05%-0.1%). It

is toxic to cells and should be disposed of properly. Avoid repeated freeze-thaw cycles.

Clonality

Polyclonal

Ig Type

Rabbit IgG

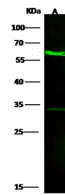
Applications

WB

Dilutions

WB: 5-10 µg/ml

Validations



| Items | Lanes | A |
|----------------------------|-------|---|
| Sample (whole cell lysate) | | 293T |
| Sample Volume (µg/lane) | | 30 |
| Gel | | 13% SDS-PAGE reducing gel |
| Recommended Concentration | | 5-10 µg/ml |
| Secondary Antibody | | Dylight 800 labeled Antibody to Rabbit IgG [F+], at 1:5000 dilution. |
| Explanation | | Developed using Odyssey imaging system. Predicted band size : 52 kDa Observed band size : 58 kDa Additional bands at : 32 kDa (We are unsure as to the identity of these extra bands.) |

Human LILRA2 Western blot (WB) 14567