

Anti-DPM1 antibody



Catalog Number: 141297

Product name

Anti-DPM1 antibody

Specificity

Human DPM1

Antibody description

Rabbit Polyclonal to Human DPM1

Preparation

Produced in rabbits immunized with a synthetic peptide corresponding to the N-terminus of the Human DPM1, and purified by antigen affinity chromatography.

Formulation

0.2 µm filtered solution in PBS

Storage

This antibody can be stored at 2°C-8°C for one month without detectable loss of activity. Antibody products are stable for twelve months from date of receipt when stored at -20°C to -80°C.

Preservative-Free.

Sodium azide is recommended to avoid contamination (final concentration 0.05%-0.1%). It is toxic to cells and should be disposed of

properly. Avoid repeated freeze-thaw cycles.

Clonality

Polyclonal

Ig Type

Rabbit IgG

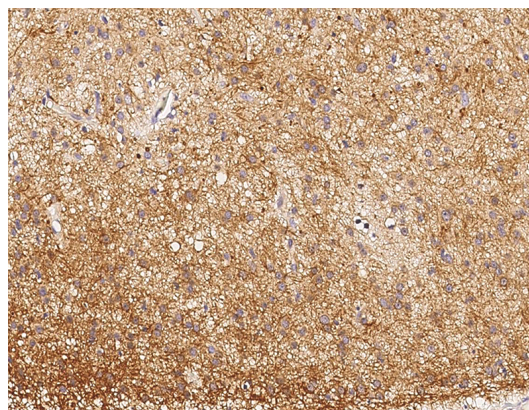
Applications

IHC-P

Dilutions

IHC-P: 0.1-2 µg/mL

Validations



DPM1 Antibody, Rabbit PAb, Antigen Affinity Purified, Immunohistochemistry