

# Anti-CCL21/6Ckine antibody



Catalog Number: 105997

## Product name

Anti-CCL21/6Ckine antibody

## Immunogen

[Rhesus CCL21/6Ckine recombinant protein](#)

## Specificity

Cynomolgus CCL21 / SCYA21

## Antibody description

Rabbit polyclonal to CCL21/6Ckine

## Preparation

Produced in rabbits immunized with purified, recombinant Cynomolgus CCL21 / SCYA21 (Q8HYP5; Met1-Pro131). CCL21 / SCYA21 specific IgG was purified by Cynomolgus CCL21 / SCYA21 affinity chromatography.

## Formulation

0.2  $\mu$ m filtered solution in PBS

## Storage

This antibody can be stored at 2°C-8°C for one month without detectable loss of activity. Antibody products are stable for twelve months from date of receipt when stored at -20°C to -80°C.

Preservative-Free.

Sodium azide is recommended to avoid contamination (final concentration 0.05%-0.1%). It is toxic to cells and should be disposed of properly. Avoid repeated freeze-thaw cycles.

## Clonality

Polyclonal

## Ig Type

Rabbit IgG

## Applications

ELISA, WB

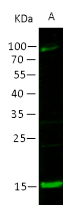
## Dilutions

WB: 5-10  $\mu$ g/ml

ELISA:0.1-0.2  $\mu$ g/mL

This antibody can be used at 0.1-0.2  $\mu$ g/mL with the appropriate secondary reagents to detect Cynomolgus CCL21 / 6Ckine. The detection limit for Cynomolgus CCL21 / 6Ckine is 0.00245 ng/well.

## Validations



Items	Lanes	A
Sample (whole cell lysate)		Hela
Sample Volume ( $\mu$ g/lane)		60
Gel		13% SDS-PAGE reducing gel
Recommended Concentration		5-10 $\mu$ g/ml
Secondary Antibody		Dylight 800-labeled Antibody To Rabbit IgG (H+L), at 1:5000 dilution.

CCL21 / 6Ckine Antibody, Rabbit PAb, Antigen Affinity Purified, Western blot