

# SCIN antibody



Catalog Number: 114997

## Product name

SCIN antibody

## Immunogen

[Human SCIN Recombinant protein \(GST tag\)](#)

## Specificity

Human, Mouse, Rat; other species not tested.

## Antibody description

SCIN Rabbit Polyclonal antibody. Positive IHC detected in human pancreas cancer tissue. Positive IF detected in HepG2 cells. Positive IP detected in human placenta tissue. Positive WB detected in human placenta tissue. Observed molecular weight by Western-blot: 80 kDa

## Preparation

This antibody was obtained by immunization of SCIN recombinant protein (Accession Number: NM\_001112706). Purification method: Antigen affinity purified.

## Formulation

PBS with 0.02% sodium azide and 50% glycerol pH 7.3.

## Storage

Store at -20°C. DO NOT ALIQUOT

## Clonality

Polyclonal

## Ig Type

Rabbit IgG

## Applications

ELISA, WB, IHC, IF, IP

## Dilutions

Recommended Dilution:

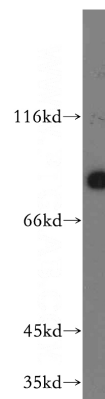
WB: 1:500-1:5000

IP: 1:200-1:1000

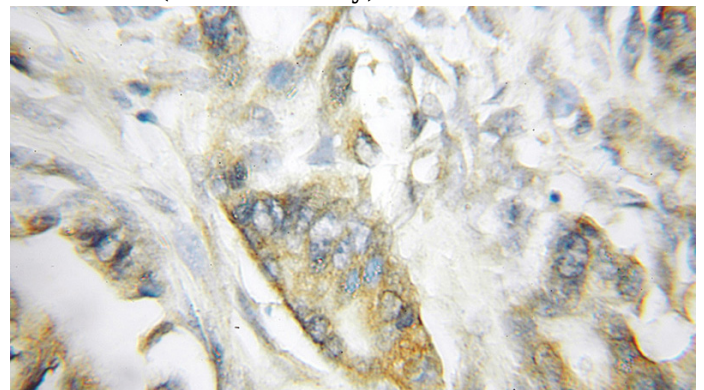
IHC: 1:20-1:200

IF: 1:10-1:100

## Validations



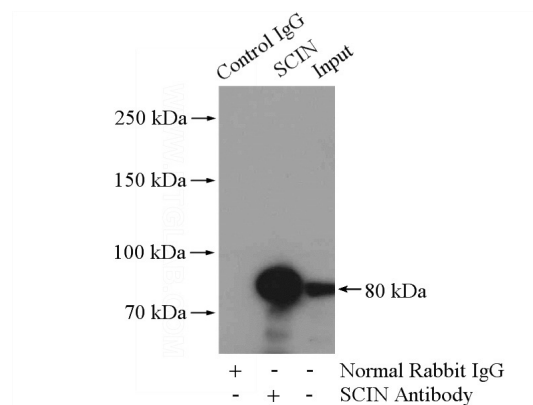
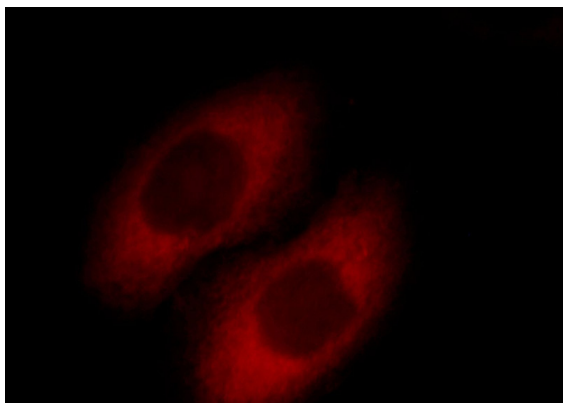
human placenta tissue were subjected to SDS PAGE followed by western blot with Catalog No:114997(SCIN antibody) at dilution of 1:300



Immunohistochemical of paraffin-embedded human pancreas cancer using Catalog No:114997(SCIN antibody) at dilution of 1:50 (under 10x lens)

# SCIN antibody

Catalog Number: 114997



Immunofluorescent analysis of HepG2 cells, using SCIN antibody Catalog No:114997 at 1:25 dilution and Rhodamine-labeled goat anti-rabbit IgG (red).

IP Result of anti-SCIN (IP:Catalog No:114997, 4ug; Detection:Catalog No:114997 1:300) with human placenta tissue lysate 2800ug.