

Anti-NSDHL Rabbit antibody



Catalog Number: 167597

Product name

Anti-NSDHL Rabbit antibody

Specificity

Human, Mouse, Rat

Antibody description

NSDHL Rabbit monoclonal antibody

Preparation

Antigen: A synthetic peptide of human NSDHL

Formulation

50nM Tris-Glycine(pH 7.4), 0.15M NaCl,
40%Glycerol, 0.01% sodium azide and 0.05% BSA

Storage

Store at 4°C short term. Store at -20°C long term.
Avoid freeze / thaw cycle.

Clonality

Monoclonal

Ig Type

Rabbit IgG

Applications

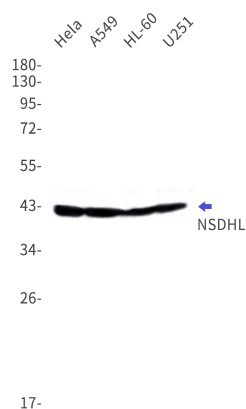
WB, IP

Dilutions

WB: 1/1000

IP: 1/20

Validations



Western blot detection of NSDHL in HeLa, A549, HL-60, U251 cell lysates using NSDHL Rabbit mAb(1:1000 diluted). Predicted band size: 42kDa. Observed band size: 42kDa.