

Rhesus KIM-1/TIM1/HACVR1 recombinant protein



Catalog Number: 504597

General Information

Protein Construction

A DNA sequence encoding the rhesus HAVCR1 (BAJ61041.1) (Asp 20-Gly 339) was expressed and purified, with additional two amino acid (Gly & Pro) at the N-terminus.

Organism

Rhesus

Expression Host

Human Cells

QC Testing

Purity

> 95 % as determined by SDS-PAGE

Endotoxin

< 1.0 EU per μg of the protein as determined by the LAL method

Stability

Samples are stable for up to twelve months from date of receipt at -70°C

Predicted N terminal

Gly

Molecular Mass

The recombinant rhesus HAVCR1 consists of 322 amino acids and has a calculated molecular mass

of 32.4 kDa.

Formulation

Lyophilized from sterile PBS, pH 7.4
1. 5 % trehalose and mannitol are added as protectants before lyophilization.
2. Please contact us for any concerns or special requirements.

Usage Guide

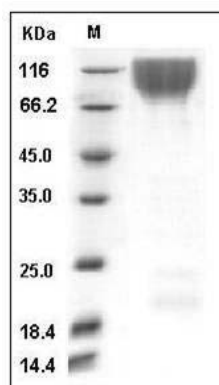
Storage

Store it under sterile conditions at -20°C to -80°C . It is recommended that the protein be aliquoted for optimal storage. Avoid repeated freeze-thaw cycles.

Reconstitution

Adding sterile water, prepare a stock solution of 0.25 mg/ml. Concentration is measured by UV-Vis.

SDS-PAGE



Cynomolgus KIM-1 / TIM1 / HACVR1 Protein SDS-PAGE