

PARVA antibody

Catalog Number: 113597

Product name

PARVA antibody

Specificity

human, mouse, rat; other species not tested.

Antibody description

PARVA Rabbit Polyclonal antibody. Positive IHC detected in human prostate cancer. Positive WB detected in human liver tissue, human kidney tissue, Jurkat cells. Observed molecular weight by Western-blot: 42kd

Preparation

This antibody was obtained by immunization of PARVA recombinant protein (Accession Number: NM_018222). Purification method: Antigen affinity purified.

Formulation

PBS with 0.1% sodium azide and 50% glycerol pH 7.3.

Storage

Store at -20°C. DO NOT ALIQUOT

Clonality

Polyclonal

Ig Type

Rabbit IgG

Applications

ELISA, WB, IHC

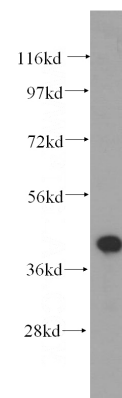
Dilutions

Recommended Dilution:

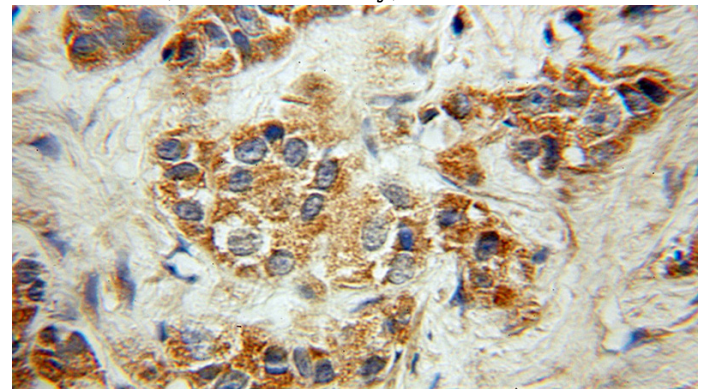
WB: 1:200-1:2000

IHC: 1:20-1:200

Validations



human liver tissue were subjected to SDS PAGE followed by western blot with Catalog No:113597(PARVA antibody) at dilution of 1:500



Immunohistochemical of paraffin-embedded human prostate cancer using Catalog No:113597(PARVA antibody) at dilution of 1:50 (under 10x lens)