

# Anti-EBOV-G antibody



Catalog Number: 142597

## Product name

Anti-EBOV-G antibody

## Immunogen

[EBOV EBOV-G / Glycoprotein \(aa:Met1-Asn637, His Tag\)](#)

## Specificity

Ebola virus EBOV (Subtype Sudan, strain Gulu) Glycoprotein / GP

## Antibody description

Rabbit Polyclonal to EBOV EBOV-G

## Preparation

Produced in rabbits immunized with purified, recombinant Ebola virus EBOV (Subtype Sudan, strain Gulu) Glycoprotein / GP . Ebola virus EBOV (Subtype Sudan, strain Gulu) Glycoprotein / GP specific IgG was purified by Ebola virus EBOV (Subtype Sudan, strain Gulu) Glycoprotein / GP affinity chromatography.

## Formulation

0.2 µm filtered solution in PBS

## Storage

This antibody can be stored at 2°C-8°C for one month without detectable loss of activity. Antibody products are stable for twelve months from date of receipt when stored at -20°C to -80°C.

Preservative-Free.

Sodium azide is recommended to avoid contamination (final concentration 0.05%-0.1%). It is toxic to cells and should be disposed of properly. Avoid repeated freeze-thaw cycles.

## Clonality

Polyclonal

## Ig Type

Rabbit IgG

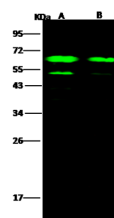
## Applications

WB, IHC-P, IP

## Dilutions

WB: 0.5-5 µg/ml

## Validations



Items	Lanes	A	B
Sample (Recombinant protein)		GP-His(Sudan ebolavirus)(1-637)	(Cat#40094-V08B1)
Sample Volume (µg/lane)		50	10
Gel		13% SDS-PAGE reducing gel	
Recommended Concentration		0.5-5 µg/ml	
Secondary Antibody		Dylight 800-labeled Antibody To Rabbit IgG (H+L), at 1:5000 dilution.	

Developed using Odyssey imaging system.

Ebola virus EBOV (Subtype Sudan, strain Gulu) Glycoprotein / GP Antibody, Rabbit PAb, Antigen Affinity Purified, Western blot