

# ICT1 antibody

Catalog Number: 111597

## Product name

ICT1 antibody

IP: 1:200-1:1000

IF: 1:10-1:100

## Specificity

Human, Mouse, Rat; other species not tested.

## Antibody description

ICT1 Rabbit Polyclonal antibody. Positive IF detected in HeLa cells. Positive WB detected in A2780 cells, SKOV-3 cells. Positive IP detected in SKOV-3 cells. Observed molecular weight by Western-blot: 19-24kd

## Preparation

This antibody was obtained by immunization of ICT1 recombinant protein (Accession Number: NM\_001545). Purification method: Antigen affinity purified.

## Formulation

PBS with 0.1% sodium azide and 50% glycerol pH 7.3.

## Storage

Store at -20°C. DO NOT ALIQUOT

## Clonality

Polyclonal

## Ig Type

Rabbit IgG

## Applications

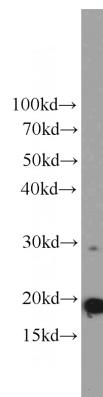
ELISA, WB, IF, IP

## Dilutions

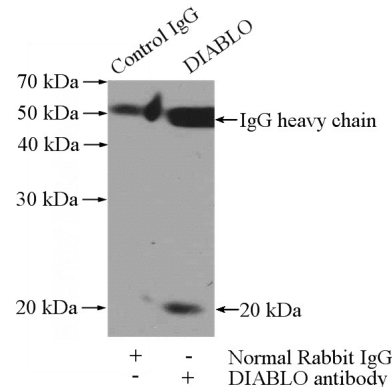
Recommended Dilution:

WB: 1:200-1:2000

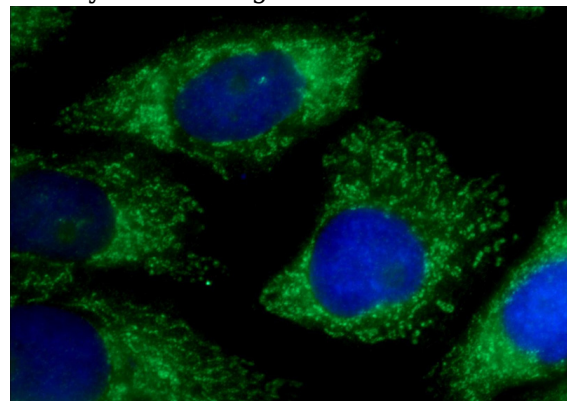
## Validations



A2780 cells were subjected to SDS PAGE followed by western blot with Catalog No:111597 (ICT1 antibody) at dilution of 1:600



IP Result of anti-ICT1 (IP: Catalog No:111597, 4ug; Detection: Catalog No:111597 1:300) with SKOV-3 cells lysate 2000ug.



Immunofluorescent analysis of HeLa cells using Catalog No:111597 (ICT1 Antibody) at dilution of

# ICT1 antibody



Catalog Number: 111597

---

1:25 and Alexa Fluor 488-conjugated AffiniPure

Goat Anti-Rabbit IgG(H+L)