

Rat CD150 / SLAM / SLAMF1 (Fc Tag) recombinant protein



Catalog Number: 502197

General Information

Gene Name Synonym

Similar to signaling lymphocytic activation molecule (Predicted)

Protein Construction

A DNA sequence encoding the rat Slamf1 (NP_001102548.1) (Met1-Leu242) was expressed with the Fc region of human IgG1 at the C-terminus.

Organism

Rat

Expression Host

Human Cells

QC Testing

Purity

> (87.3+8.5) % as determined by SDS-PAGE.

Endotoxin

<1.0 EU per μ g protein as determined by the LAL method.

Stability

Samples are stable for up to twelve months from date of receipt at -70°C

Predicted N terminal

Thr 25

Molecular Mass

The recombinant rat Slamf1 consists 456 amino acids and predicts a molecular mass of 51.3 kDa.

Formulation

Lyophilized from sterile PBS, pH 7.4.

1. 5 % trehalose and mannitol are added as protectants before lyophilization.

2. Please contact us for any concerns or special requirements.

Usage Guide

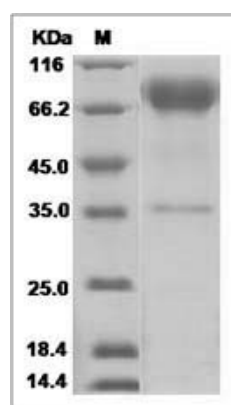
Storage

Store it under sterile conditions at -20°C to -80°C. It is recommended that the protein be aliquoted for optimal storage. Avoid repeated freeze-thaw cycles.

Reconstitution

Adding sterile water, prepare a stock solution of 0.25 mg/ml. Concentration is measured by UV-Vis.

SDS-PAGE



Slamf1 protein SDS-PAGE