

## General Information

### Gene Name Synonym

Mucin-1; MUC-1; Breast carcinoma-associated antigen DF3; Cancer antigen 15-3; CA 15-3; Carcinoma-associated mucin; Episialin; H23AG; Krebs von den Lungen-6; KL-6; PEMT; Peanut-reactive urinary mucin; PUM; Polymorphic epithelial mucin; PEM; Tumor-associated epithelial membrane antigen; EMA; Tumor-associated mucin; CD227; MUC1

### Protein Construction

A DNA sequence encoding the Human MUC1/PUM Ala23-Gly167 is expressed with a Fc tag at the C-terminus.

### Organism

Human

### Expression Host

Human Cells

## QC Testing

### Purity

>90% as determined by SDS-PAGE.

### Endotoxin

<1.0 EU per  $\mu\text{g}$  protein as determined by the LAL method.

### Stability

Store for up to 12 months at  $-20^{\circ}\text{C}$  to  $-80^{\circ}\text{C}$  as

lyophilized powder. Aliquots of reconstituted samples are stable at  $< -20^{\circ}\text{C}$  for 3 months.

### Formulation

Lyophilized from a  $0.2 \mu\text{m}$  filtered solution of PBS, pH7.4.

## Usage Guide

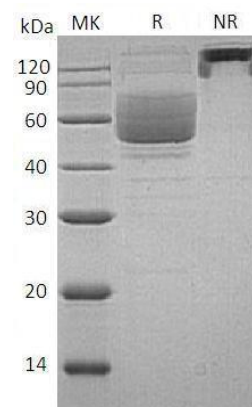
### Storage

Lyophilized protein should be stored at  $< -20^{\circ}\text{C}$ , though stable at room temperature for 3 weeks. Reconstituted protein solution can be stored at  $4-7^{\circ}\text{C}$  for 2-7 days.

### Reconstitution

Always centrifuge tubes before opening. Do not mix by vortex or pipetting. It is not recommended to reconstitute to a concentration less than  $100\mu\text{g}/\text{ml}$ . Dissolve the lyophilized protein in ddH<sub>2</sub>O. Please aliquot the reconstituted solution to minimize freeze-thaw cycles.

## SDS-PAGE



Human MUC1/PUM (Fc tag) recombinant protein