

Human CNDP1/CN1/CPGL2/UNQ1915/PRO4380 (His tag) recombinant protein



Catalog Number: 519497

General Information

Gene Name Synonym

Beta-Ala-His Dipeptidase, CNDP Dipeptidase 1, Carnosine Dipeptidase 1, Glutamate Carboxypeptidase-Like Protein 2, Serum Carnosinase, CNDP1, CN1, CPGL2

Protein Construction

A DNA sequence encoding the Human CNDP1/CN1/CPGL2/UNQ1915/PRO4380 Pro28-His507 is expressed with a 6His tag at the C-terminus.

Organism

Human

Expression Host

Human Cells

QC Testing

Purity

>95% as determined by SDS-PAGE.

Endotoxin

<1.0 EU per μg protein as determined by the LAL method.

Stability

Store for up to 6 months at -20°C

Formulation

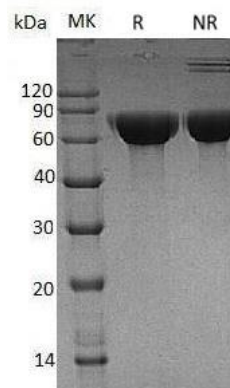
Supplied as a $0.2\ \mu\text{m}$ filtered solution of 20mM TrisHCl, 150mM NaCl, pH 7.5.

Usage Guide

Storage

Store at $<-20^{\circ}\text{C}$, minimize freeze-thaw cycles.

SDS-PAGE



Human CNDP1/CN1/CPGL2/UNQ1915/PRO4380 (His tag) recombinant protein