

# Anti-KIF22 (2E11) Mouse antibody



Catalog Number: 168497

## Product name

Anti-KIF22 (2E11) Mouse antibody

## Specificity

Human

## Antibody description

KIF22 (2E11) Mouse monoclonal antibody

## Preparation

Antigen: Purified recombinant fragment of human KID expressed in E. Coli.

## Formulation

Ascitic fluid containing 0.03% sodium azide.

## Storage

Store at 4°C short term. Store at -20°C long term. Avoid freeze / thaw cycle.

## Clonality

Monoclonal

## Ig Type

Mouse IgG1

## Applications

WB, IHC-P

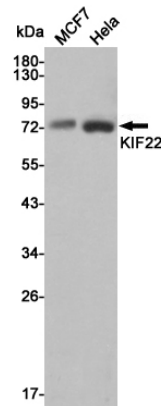
## Dilutions

WB: 1/500 - 1/2000

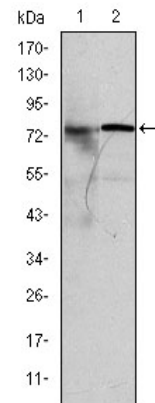
IHC: 1/200 - 1/1000

ELISA: 1/10000

## Validations

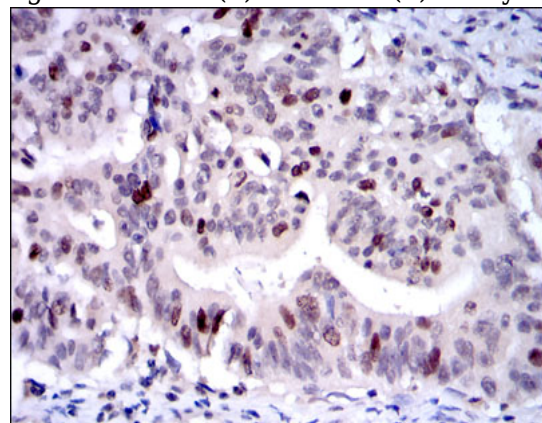


Western blot analysis of extracts from MCF7 and HeLa cell lysates using KIF22 mouse mAb (1:1000 diluted). Predicted band size: 73KDa. Observed



band size: 73KDa.

Western blot analysis using KID mouse mAb against MCF-7 (1) and HeLa (2) cell lysate.

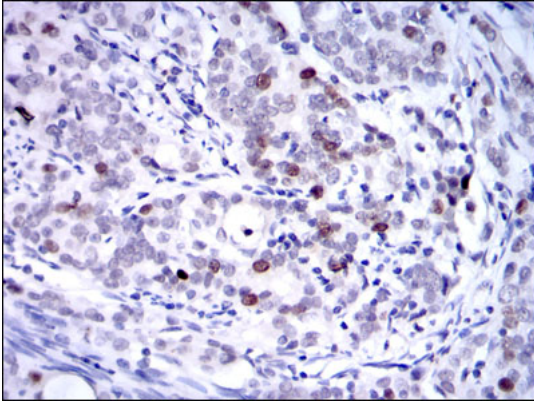


Immunohistochemical analysis of paraffin-embedded rectum cancer tissues using KID mouse mAb with DAB staining.

# Anti-KIF22 (2E11) Mouse antibody

Catalog Number: 168497

---



Immunohistochemical analysis of paraffin-embedded cervical cancer tissues using KID mouse mAb with DAB staining.