

Anti-HIF3A antibody

Catalog Number: 175497

Product name

Anti-HIF3A antibody

Specificity

Human, Mouse, Rat, Dog, Pig, Cow, Horse

Antibody description

Rabbit polyclonal antibody to HIF3A

Preparation

This antigen of this antibody was klh conjugated synthetic peptide derived from human hif3 alpha 131-230/669

Formulation

Liquid, 0.01M TBS(pH7.4) with 1% BSA, 0.03% Proclin300 and 50% Glycerol.

Storage

Store at -20°C for one year. Avoid repeated freeze/thaw cycles. The lyophilized antibody is stable at room temperature for at least one month and for greater than a year when kept at -20°C. When reconstituted in sterile pH 7.4 0.01M PBS or diluent of antibody the antibody is stable for at least two weeks at 2-4°C.

Clonality

Polyclonal

Ig Type

Rabbit IgG

Applications

WB, IHC-P, FC

Dilutions

WB:1:500-2000

IHC-P:1:400-800

FC:1µg/Test

Validations

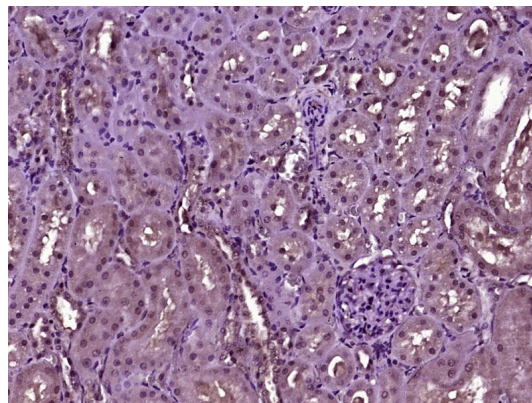
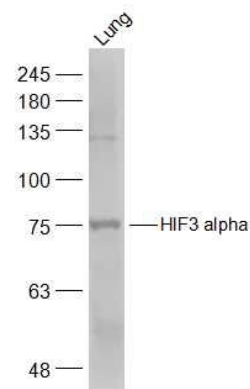


Fig1: Paraformaldehyde-fixed, paraffin embedded (Rat kidney); Antigen retrieval by boiling in sodium citrate buffer (pH6.0) for 15min; Block endogenous peroxidase by 3% hydrogen peroxide for 20 minutes; Blocking buffer (normal goat serum) at 37°C for 30min; Antibody incubation with (HIF3 alpha) Polyclonal Antibody, Unconjugated at 1:400 overnight at 4°C, followed by operating according to SP Kit(Rabbit) (sp-0023)



instructions and DAB staining.

Fig2: Sample: Lung (Mouse) Lysate at 40 ug; Primary: Anti-HIF3 alpha at 1/500 dilution; Secondary: IRDye800CW Goat Anti-Rabbit IgG at 1/20000 dilution; Predicted band size: 74 kDa; Observed band size: 75 kDa

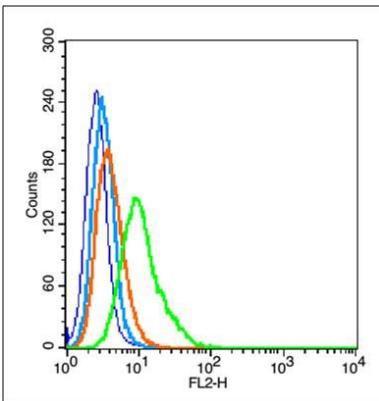


Fig3: Blank control (blue line): A549 (fixed with 2% paraformaldehyde (10 min) , then permeabilized with 90% ice-cold methanol for 30 min on ice.); Primary Antibody (green line): Rabbit Anti-HIF3 alpha antibody (bs-5898R), dilution: 1 μ g /10⁶ cells;; Isotype Control Antibody (orange line): Rabbit IgG .; Secondary Antibody (white blue line): Goat anti-rabbit IgG-PE, Dilution: 1 μ g /test.