

RABGAP1L antibody



Catalog Number: 114497

Product name

RABGAP1L antibody

Immunogen

[Human RABGAP1L Recombinant protein \(GST tag\)](#)

Specificity

Human, Mouse, Rat; other species not tested.

Antibody description

RABGAP1L Rabbit Polyclonal antibody. Positive IF detected in HeLa cells. Positive IHC detected in human hepat^cirrhosis tissue, human placenta tissue. Positive IP detected in HeLa cells. Positive WB detected in HeLa cells, MCF7 cells. Observed molecular weight by Western-blot: 93-105 kDa

Preparation

This antibody was obtained by immunization of RABGAP1L recombinant protein (Accession Number: NM_001366445). Purification method: Antigen affinity purified.

Formulation

PBS with 0.02% sodium azide and 50% glycerol pH 7.3.

Storage

Store at -20°C. DO NOT ALIQUOT

Clonality

Polyclonal

Ig Type

Rabbit IgG

Applications

ELISA, IHC, IF, WB, IP

Dilutions

Recommended Dilution:

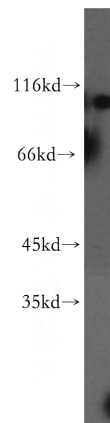
WB: 1:500-1:5000

IP: 1:500-1:5000

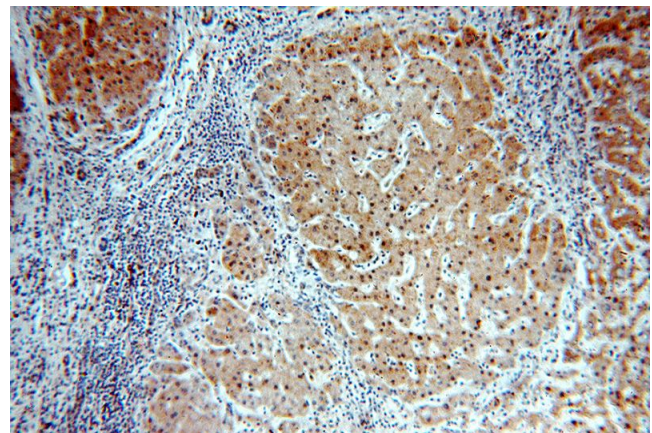
IHC: 1:20-1:200

IF: 1:10-1:100

Validations



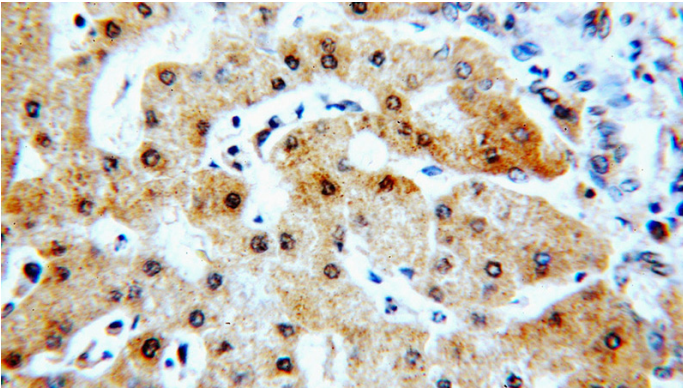
HeLa cells were subjected to SDS PAGE followed by western blot with Catalog No:114497(RABGAP1L antibody) at dilution of 1:1000



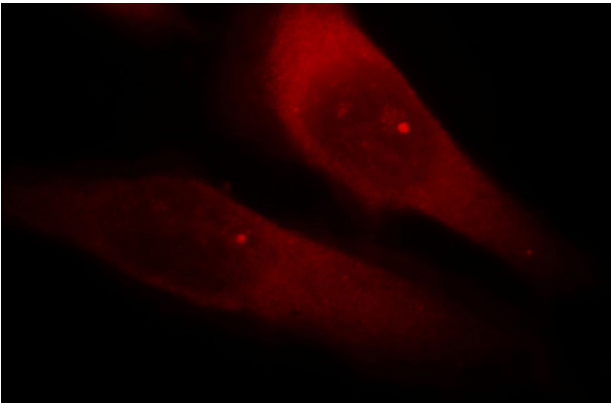
Immunohistochemical of paraffin-embedded human hepatocirrhosis using Catalog No:114497(RABGAP1L antibody) at dilution of 1:100 (under 10x lens)

RABGAP1L antibody

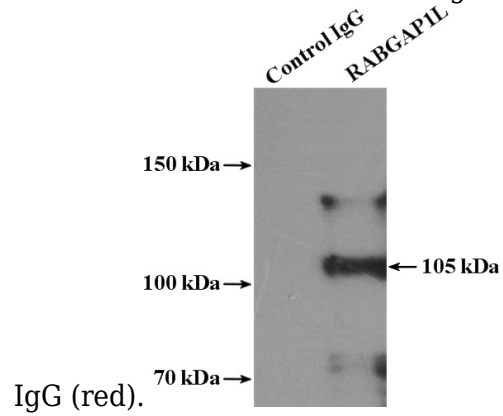
Catalog Number: 114497



Immunohistochemical of paraffin-embedded human hepatocirrhosis using Catalog No:114497(RABGAP1L antibody) at dilution of 1:100 (under 40x lens)



Immunofluorescent analysis of HeLa cells, using RABGAP1L antibody Catalog No:114497 at 1:25 dilution and Rhodamine-labeled goat anti-rabbit



IP Result of anti-RABGAP1L (IP:Catalog No:114497, 4ug; Detection:Catalog No:114497 1:1000) with HeLa cells lysate 3200ug.