

# MATR3 antibody

Catalog Number: 112497

## Product name

MATR3 antibody

IP: 1:200-1:1000

IF: 1:10-1:100

## Specificity

Human, Mouse, Rat; other species not tested.

## Antibody description

MATR3 Rabbit Polyclonal antibody. Positive IP detected in MCF-7 cells. Positive WB detected in MCF7 cells. Positive IF detected in HepG2 cells. Observed molecular weight by Western-blot: 95 kDa

## Preparation

This antibody was obtained by immunization of MATR3 recombinant protein (Accession Number: NM\_001400454). Purification method: Antigen affinity purified.

## Formulation

PBS with 0.1% sodium azide and 50% glycerol pH 7.3.

## Storage

Store at -20°C. DO NOT ALIQUOT

## Clonality

Polyclonal

## Ig Type

Rabbit IgG

## Applications

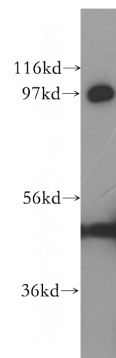
ELISA, WB, IF, IP

## Dilutions

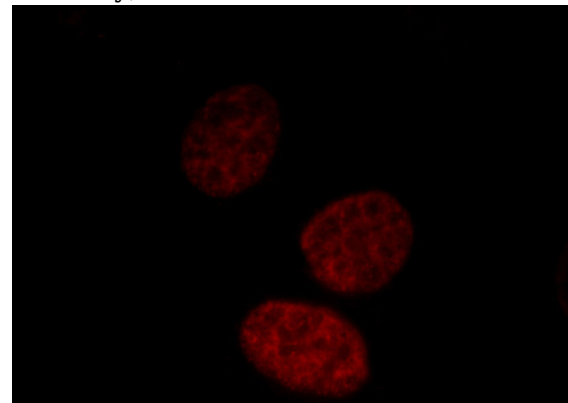
Recommended Dilution:

WB: 1:500-1:5000

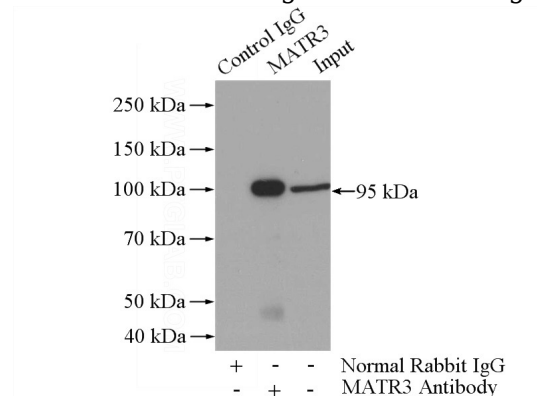
## Validations



MCF7 cells were subjected to SDS PAGE followed by western blot with Catalog No:112497(MATR3 antibody) at dilution of 1:400



Immunofluorescent analysis of HepG2 cells, using MATR3 antibody Catalog No: at 1:25 dilution and Rhodamine-labeled goat anti-rabbit IgG (red).



IP Result of anti-MATR3 (IP:Catalog No:112497, 4ug; Detection:Catalog No:112497 1:300) with

# MATR3 antibody



Catalog Number: 112497

---

MCF-7 cells lysate 1040ug.