

# Anti-CMBL antibody



Catalog Number: 142497

## Product name

Anti-CMBL antibody

## Immunogen

[Human CMBL \(His Tag\) recombinant protein](#)

## Specificity

Human CMBL

## Antibody description

Rabbit Polyclonal to Human CMBL

## Preparation

Produced in rabbits immunized with purified, recombinant Human CMBL. CMBL specific IgG was purified by Human CMBL affinity chromatography.

## Formulation

0.2  $\mu$ m filtered solution in PBS

## Storage

This antibody can be stored at 2°C-8°C for one month without detectable loss of activity. Antibody products are stable for twelve months from date of receipt when stored at -20°C to -80°C.

Preservative-Free.

Sodium azide is recommended to avoid contamination (final concentration 0.05%-0.1%). It is toxic to cells and should be disposed of properly. Avoid repeated freeze-thaw cycles.

## Clonality

Polyclonal

## Ig Type

Rabbit IgG

## Applications

WB, ELISA, IP

## Dilutions

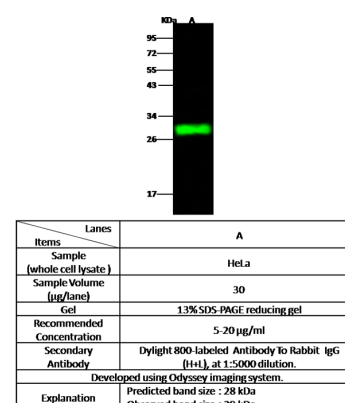
WB: 5-20  $\mu$ g/ml

ELISA: 0.1-0.2  $\mu$ g/ml

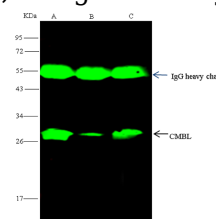
This antibody can be used at 0.1-0.2  $\mu$ g/ml with the appropriate secondary reagents to detect Human CMBL.

IP: 1-4  $\mu$ l/mg of lysate

## Validations



## CMBL Antibody, Rabbit PAb, Antigen Affinity



Purified, Western blot

## CMBL Antibody, Rabbit PAb, Antigen Affinity

Purified, Immunoprecipitation