

# EXD1 antibody

Catalog Number: 110497

## Product name

EXD1 antibody

## Specificity

Human, Mouse, Rat; other species not tested.

## Antibody description

EXD1 Rabbit Polyclonal antibody. Positive WB detected in HeLa cells, SH-SY5Y cells. Positive IF detected in HeLa cells. Observed molecular weight by Western-blot: 36 kDa; 58 kDa; 75 kDa

## Preparation

This antibody was obtained by immunization of EXD1 recombinant protein (Accession Number: XM\_047432210). Purification method: Antigen affinity purified.

## Formulation

PBS with 0.1% sodium azide and 50% glycerol pH 7.3.

## Storage

Store at -20°C. DO NOT ALIQUOT

## Clonality

Polyclonal

## Ig Type

Rabbit IgG

## Applications

ELISA, WB, IF

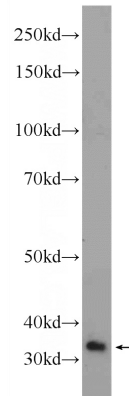
## Dilutions

Recommended Dilution:

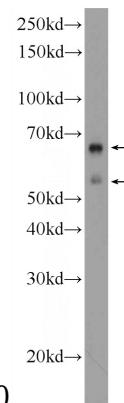
WB: 1:200-1:1000

IF: 1:20-1:200

## Validations

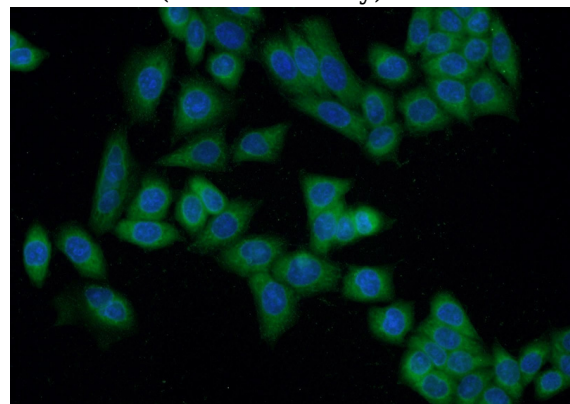


HeLa cells were subjected to SDS PAGE followed by western blot with Catalog No:110497(EXD1



Antibody) at dilution of 1:300

SH-SY5Y cells were subjected to SDS PAGE followed by western blot with Catalog No:110497(EXD1 Antibody) at dilution of 1:600



Immunofluorescent analysis of HeLa cells using Catalog No:110497(EXD1 Antibody) at dilution of 1:50 and Alexa Fluor 488-conjugated AffiniPure Goat Anti-Rabbit IgG(H+L)