

# CDC25B antibody

Catalog Number: 109097

## Product name

CDC25B antibody

IP: 1:200-1:1000

IHC: 1:20-1:200

## Specificity

Human, Mouse; other species not tested.

## Antibody description

CDC25B Rabbit Polyclonal antibody. Positive IP detected in mouse liver tissue. Positive WB detected in mouse liver tissue, Jurkat cells, mouse brain tissue, Raji cells. Positive IHC detected in human lymphoma tissue. Observed molecular weight by Western-blot: 60-70 kDa

## Preparation

This antibody was obtained by immunization of CDC25B recombinant protein (Accession Number: NM\_021873). Purification method: Antigen affinity purified.

## Formulation

PBS with 0.1% sodium azide and 50% glycerol pH 7.3.

## Storage

Store at -20°C. DO NOT ALIQUOT

## Clonality

Polyclonal

## Ig Type

Rabbit IgG

## Applications

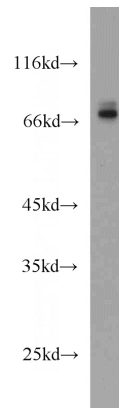
ELISA, WB, IHC, IP

## Dilutions

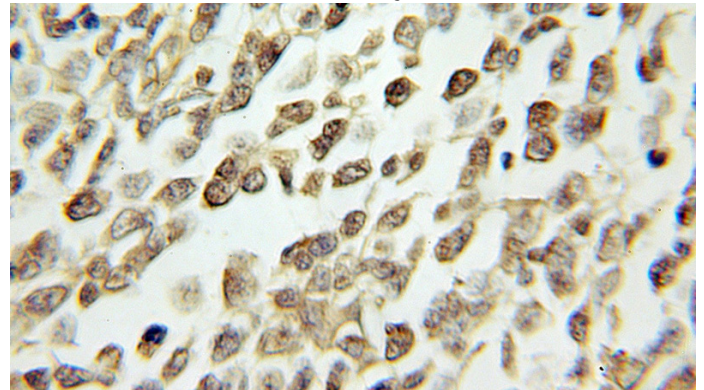
Recommended Dilution:

WB: 1:200-1:1000

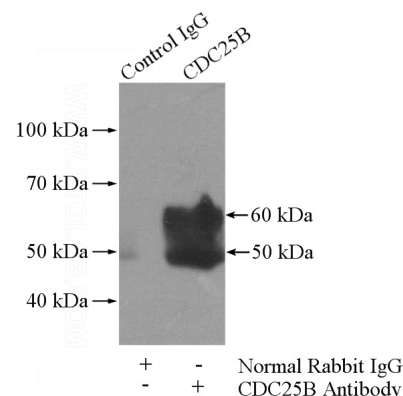
## Validations



mouse liver tissue were subjected to SDS PAGE followed by western blot with Catalog No:109097(CDC25B antibody) at dilution of 1:300



Immunohistochemical of paraffin-embedded human lymphoma using Catalog No:109097(CDC25B antibody) at dilution of 1:100 (under 10x lens)



IP Result of anti-CDC25B (IP:Catalog No:109097,

# CDC25B antibody



Catalog Number: 109097

---

4ug; Detection:Catalog No:109097 1:300) with mouse liver tissue lysate 4000ug.