

Anti-Synapsin I Rabbit antibody



Catalog Number: 169097

Product name

Anti-Synapsin I Rabbit antibody

Specificity

Human, Mouse, Rat

Antibody description

Synapsin I Rabbit polyclonal antibody

Preparation

Antigen: The antiserum was produced against synthesized peptide derived from human Synapsin. AA range:3-52

Formulation

Liquid in PBS containing 50% glycerol, 0.5% BSA and 0.02% sodium azide.

Storage

Store at 4°C short term. Store at -20°C long term. Avoid freeze / thaw cycle.

Clonality

Polyclonal

Ig Type

Rabbit IgG

Applications

WB, IHC-P, ICC/IF, ELISA

Dilutions

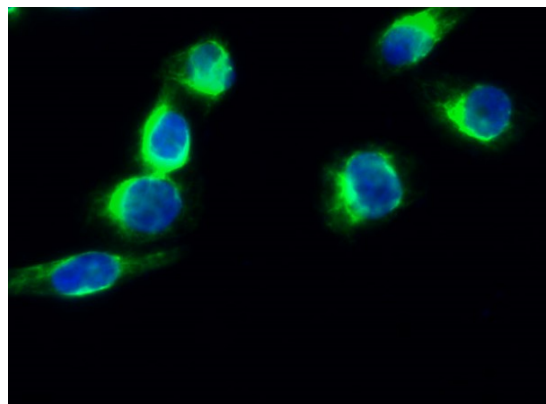
WB: 1/500 - 1/2000

IHC: 1/100 - 1/300

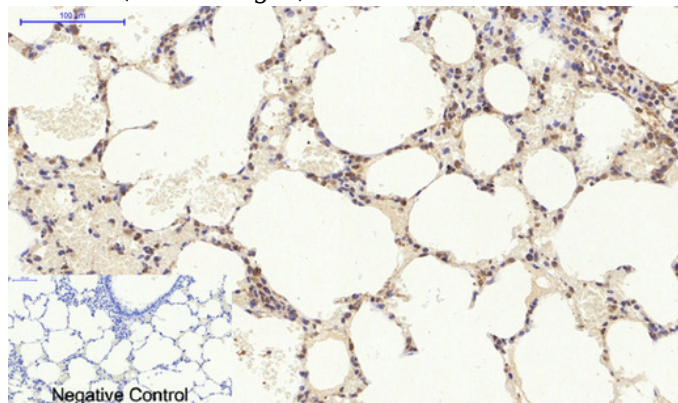
IF: 1/200 - 1/1000

ELISA: 1/20000

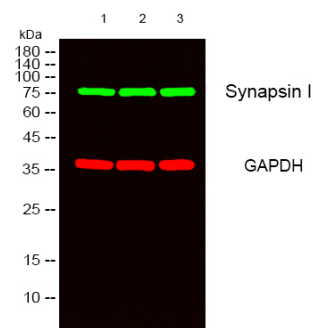
Validations



Immunofluorescence analysis of HeLa cell. Synapsin I Polyclonal Antibody(green) was diluted at 1:200(4° overnight)



Immunohistochemical analysis of paraffin-embedded Rat-lung tissue. Synapsin I Polyclonal Antibody was diluted at 1:200(4°C,overnight). Sodium citrate pH 6.0 was used for antibody



retrieval(>98°C,20min)

Western blot analysis of lysates HeLa,293, 3T3 cells, primary antibody was diluted at 1:1000, 4°over night, secondary antibodywas diluted at 1:10000, 37° 1hour.