

# acetylated Tubulin (Lys40) antibody



Catalog Number: 107097

## Product name

acetylated Tubulin (Lys40) antibody

IHC: 1:20-1:200

IF: 1:20-1:200

## Specificity

Human, Mouse, Rat, Dog; other species not tested.

## Antibody description

acetylated Tubulin (Lys40) Mouse Monoclonal antibody. Positive IF detected in MDCK cells. Positive IHC detected in human lung cancer tissue, human gliomas tissue. Positive WB detected in L02 cells. Observed molecular weight by Western-blot: 55 kDa

## Preparation

This antibody was obtained by immunization of Peptide (Accession Number: NM\_006009). Purification method: Protein G purified.

## Formulation

PBS with 0.02% sodium azide and 50% glycerol pH 7.3.

## Storage

Store at -20°C. DO NOT ALIQUOT

## Clonality

Monoclonal

## Ig Type

Mouse IgG1

## Applications

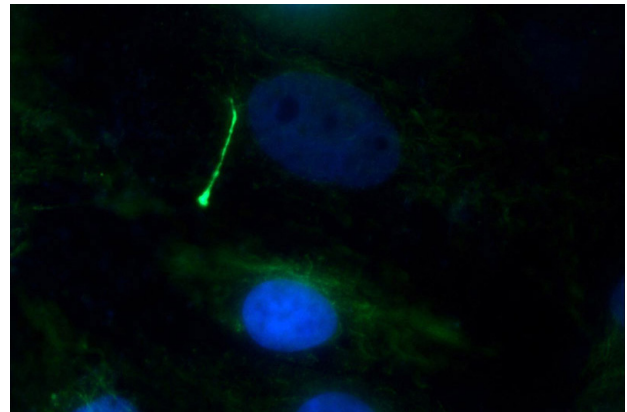
ELISA, WB, IHC, IF

## Dilutions

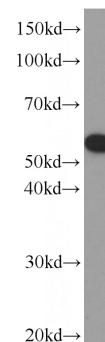
Recommended Dilution:

WB: 1:500-1:5000

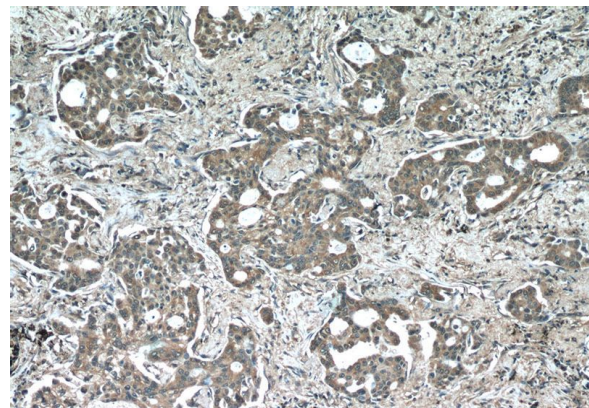
## Validations



Immunofluorescent analysis of MDCK cells using Catalog No:107557(TUBA1A(ace-40Lys) Antibody) at dilution of 1:50 and Alexa Fluor 488-conjugated AffiniPure Goat Anti-Mouse IgG(H+L)



L02 cells were subjected to SDS PAGE followed by western blot with Catalog No:107557(TUBA1A(ace-40Lys) Antibody) at dilution of 1:1000

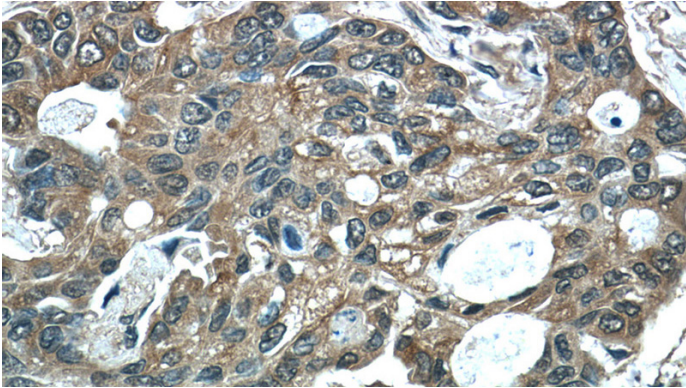


# acetylated Tubulin (Lys40) antibody

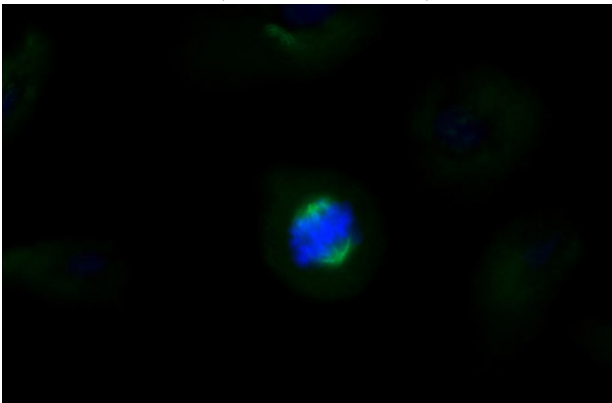


Catalog Number: 107097

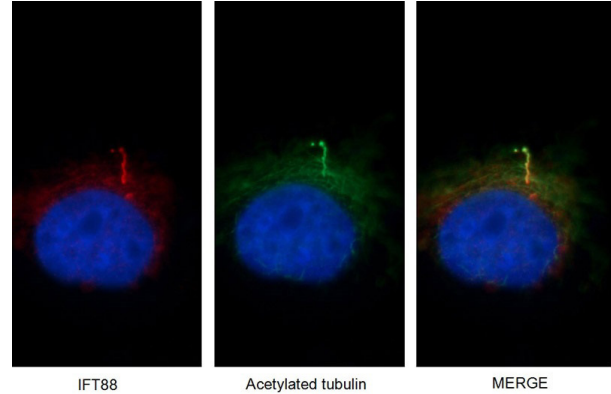
Immunohistochemistry of paraffin-embedded human lung cancer tissue slide using Catalog No:107557(TUBA1A(ace-40Lys) Antibody) at dilution of 1:50 (under 10x lens)



Immunohistochemistry of paraffin-embedded human lung cancer tissue slide using Catalog No:107557(TUBA1A(ace-40Lys) Antibody) at dilution of 1:50 (under 40x lens)



Immunofluorescent analysis of MDCK cells using Catalog No:107557(TUBA1A(ace-40Lys) Antibody) at dilution of 1:100 and Alexa Fluor 488-conjugated AffiniPure Goat Anti-Mouse IgG(H+L)



Immunofluorescent images of MDCK cells stained for IFT88 rabbit pAb (Catalog No:111674) and acetylated tubulin mouse mAb (Catalog No:107557) at dilution of 1:50, further stained with Alexa Fluor 594-conjugated AffiniPure Goat Anti-Rabbit IgG (H+L) for Catalog No:111674, and Alexa Fluor 488-conjugated AffiniPure Goat anti-Mouse IgG (H+L) for Catalog No:107557.