

# PPP2R1A antibody



Catalog Number: 114097

## Product name

PPP2R1A antibody

Recommended Dilution:

WB: 1:200-1:2000

## Immunogen

IHC: 1:20-1:200

[Human PPP2R1A Recombinant protein \(GST tag\)](#)

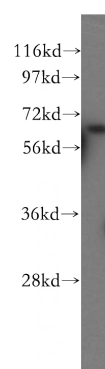
## Validations

## Specificity

Human, Mouse, Rat; other species not tested.

## Antibody description

PPP2R1A Rabbit Polyclonal antibody. Positive WB detected in HepG2 cells, A431 cells, HeLa cells, mouse kidney tissue. Positive IHC detected in human kidney tissue, human ovary tumor tissue. Observed molecular weight by Western-blot: 65 kDa



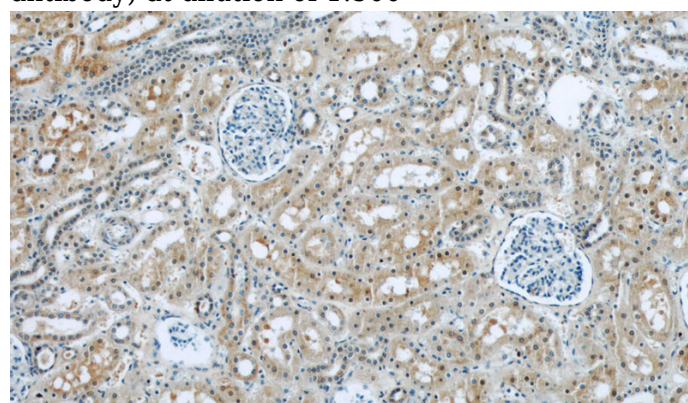
## Preparation

This antibody was obtained by immunization of PPP2R1A recombinant protein (Accession Number: NM\_014225). Purification method: Antigen affinity purified.

HepG2 cells were subjected to SDS PAGE followed by western blot with Catalog No:114097(PPP2R1A antibody) at dilution of 1:500

## Formulation

PBS with 0.02% sodium azide and 50% glycerol pH 7.3.



## Storage

Store at -20°C. DO NOT ALIQUOT

## Clonality

Polyclonal

## Ig Type

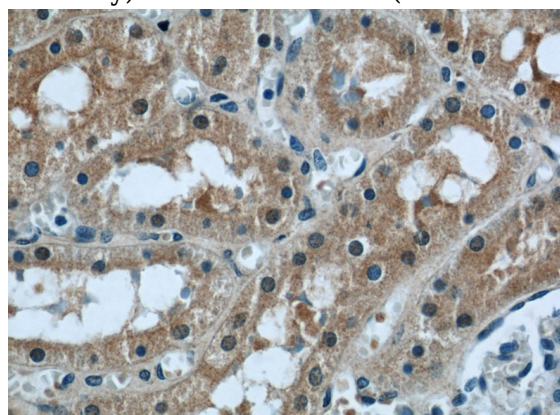
Rabbit IgG

## Applications

ELISA, WB, IHC

## Dilutions

Immunohistochemical of paraffin-embedded human kidney using Catalog No:114097(PPP2R1A antibody) at dilution of 1:50 (under 10x lens)



# PPP2R1A antibody



Catalog Number: 114097

---

Immunohistochemical of paraffin-embedded

human kidney using Catalog No:114097(PPP2R1A antibody) at dilution of 1:50 (under 40x lens)