

KLHL20 antibody

Catalog Number: 112097

Product name

KLHL20 antibody

Specificity

human, mouse, rat; other species not tested.

Antibody description

KLHL20 Rabbit Polyclonal antibody. Positive IHC detected in human kidney. Positive WB detected in HEK-293 cells, mouse liver tissue. Observed molecular weight by Western-blot: 65-67kd

Preparation

This antibody was obtained by immunization of KLHL20 recombinant protein (Accession Number: NM_014458). Purification method: Antigen affinity purified.

Formulation

PBS with 0.02% sodium azide and 50% glycerol pH 7.3.

Storage

Store at -20°C. DO NOT ALIQUOT

Clonality

Polyclonal

Ig Type

Rabbit IgG

Applications

ELISA, WB, IHC

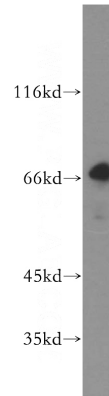
Dilutions

Recommended Dilution:

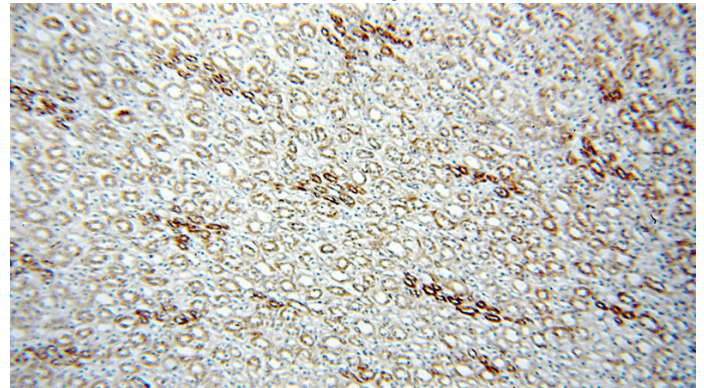
WB: 1:200-1:2000

IHC: 1:20-1:200

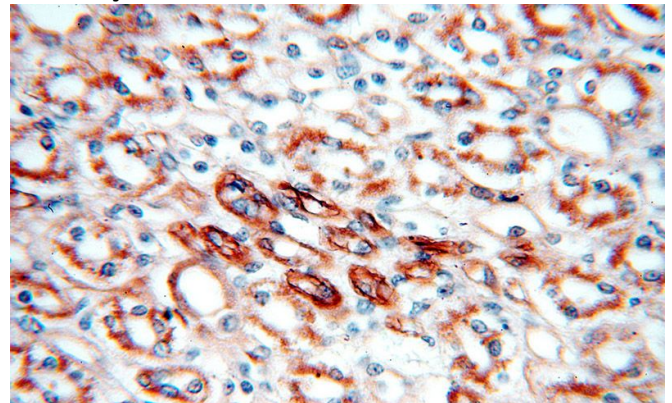
Validations



HEK-293 cells were subjected to SDS PAGE followed by western blot with Catalog No:112097(KLHL20 antibody) at dilution of 1:500



Immunohistochemical of paraffin-embedded human kidney using Catalog No:112097(KLHL20 antibody) at dilution of 1:50 (under 10x lens)



Immunohistochemical of paraffin-embedded human kidney using Catalog No:112097(KLHL20 antibody) at dilution of 1:50 (under 40x lens)