

Anti-Cyclin A2 Rabbit antibody



Catalog Number: 168787

Product name

Anti-Cyclin A2 Rabbit antibody

Specificity

Human

Antibody description

Cyclin A2 Rabbit monoclonal antibody

Preparation

Antigen: Recombinant protein of human Cyclin A2

Formulation

50nM Tris-Glycine(pH 7.4), 0.15M NaCl, 40%Glycerol, 0.01% sodium azide and 0.05% BSA.

Storage

Store at 4°C short term. Store at -20°C long term. Avoid freeze / thaw cycle.

Clonality

Monoclonal

Ig Type

Rabbit IgG

Applications

WB, IHC-P, ICC/IF, IP

Dilutions

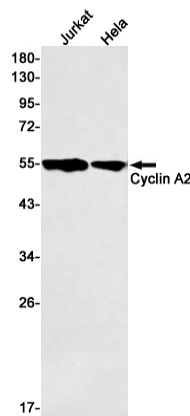
WB: 1/1000

IHC: 1/200

ICC/IF: 1/50

IP: 1/20

Validations



Western blot detection of Cyclin A2 in Jurkat, HeLa cell lysates using Cyclin A2 Rabbit mAb(1:500 diluted). Predicted band size:49kDa. Observed band size:49kDa.