

# SYNPO2L antibody



Catalog Number: 115787

## Product name

SYNPO2L antibody

## Specificity

human, mouse, rat; other species not tested.

## Antibody description

SYNPO2L Rabbit Polyclonal antibody. Positive IF detected in HepG2. Positive WB detected in mouse testis tissue, PC-3 cells. Observed molecular weight by Western-blot: 79kd

## Preparation

This antibody was obtained by immunization of SYNPO2L recombinant protein (Accession Number: NM\_024875). Purification method: Antigen affinity purified.

## Formulation

PBS with 0.02% sodium azide and 50% glycerol pH 7.3.

## Storage

Store at -20°C. DO NOT ALIQUOT

## Clonality

Polyclonal

## Ig Type

Rabbit IgG

## Applications

ELISA, WB, IF

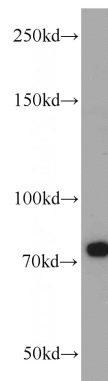
## Dilutions

Recommended Dilution:

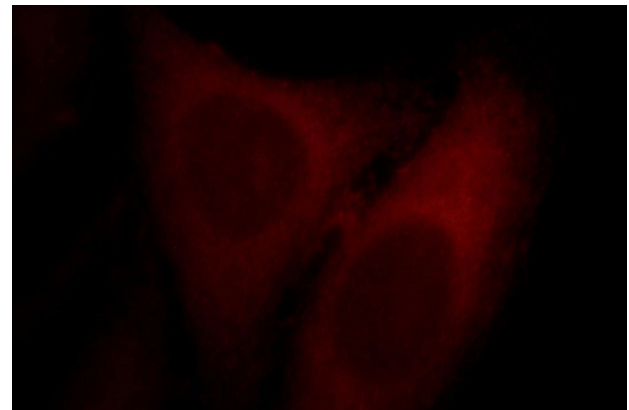
WB: 1:200-1:1000

IF: 1:10-1:100

## Validations



mouse testis tissue were subjected to SDS PAGE followed by western blot with Catalog No:115787(SYNPO2L antibody) at dilution of 1:300



Immunofluorescent analysis of HepG2 cells, using SYNPO2L antibody Catalog No:115787 at 1:25 dilution and Rhodamine-labeled goat anti-rabbit IgG (red).