

Anti-MAP2 antibody



Catalog Number: 105787

Product name

Anti-MAP2 antibody

Specificity

Human MAP2

Antibody description

Rabbit polyclonal to MAP2

Preparation

Produced in rabbits immunized with a synthetic peptide corresponding to the center region of the Human MAP2, and purified by antigen affinity chromatography.

Formulation

0.2 µm filtered solution in PBS

Storage

This antibody can be stored at 2°C-8°C for one month without detectable loss of activity. Antibody products are stable for twelve months from date of receipt when stored at -20°C to -80°C.

Preservative-Free.

Sodium azide is recommended to avoid contamination (final concentration 0.05%-0.1%). It is toxic to cells and should be disposed of properly. Avoid repeated freeze-thaw cycles.

Clonality

Polyclonal

Ig Type

Rabbit IgG

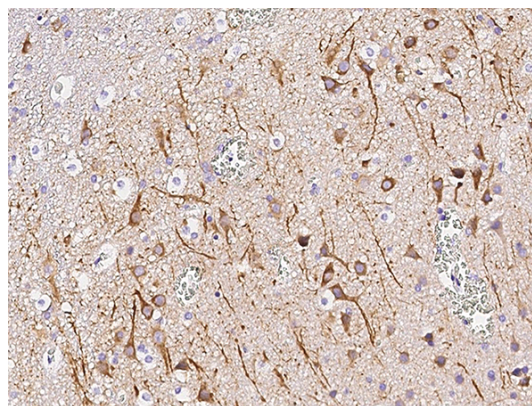
Applications

IHC-P

Dilutions

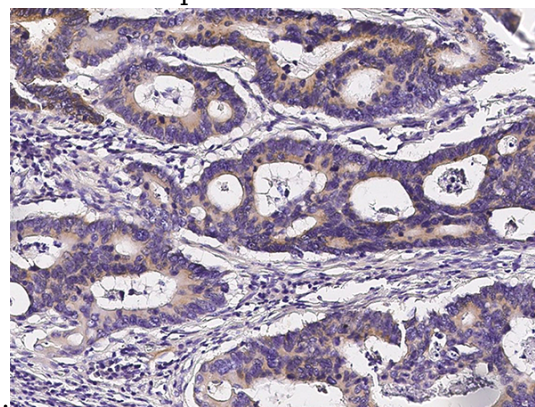
IHC-P: 0.05-1 µg/mL

Validations



MAP2 Antibody, Rabbit PAb, Antigen Affinity Purified, Immunohistochemistry

Immunochemical staining of human MAP2 in human brain with rabbit polyclonal antibody (0.1 µg/mL, formalin-fixed paraffin embedded



sections).

MAP2 Antibody, Rabbit PAb, Antigen Affinity Purified, Immunohistochemistry

Immunochemical staining of human MAP2 in human colon carcinoma with rabbit polyclonal antibody (0.1 µg/mL, formalin-fixed paraffin embedded sections).