

ROR1 antibody



Catalog Number: 114787

Product name

ROR1 antibody

Specificity

Human, Mouse, Rat; other species not tested.

Antibody description

ROR1 Rabbit Polyclonal antibody. Positive WB detected in K-562 cells, HeLa cells. Positive IHC detected in human breast cancer tissue, human ovary tumor tissue. Observed molecular weight by Western-blot: 130-140kd

Preparation

This antibody was obtained by immunizing 30-406aa of human ROR1 (NP_005003.2). Purification method: Antigen affinity purified.

Formulation

PBS with 0.02% sodium azide and 50% glycerol pH 7.3.

Storage

Store at -20°C. DO NOT ALIQUOT

Clonality

Polyclonal

Ig Type

Rabbit IgG

Applications

ELISA, WB, IHC

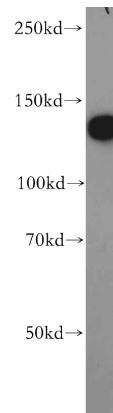
Dilutions

Recommended Dilution:

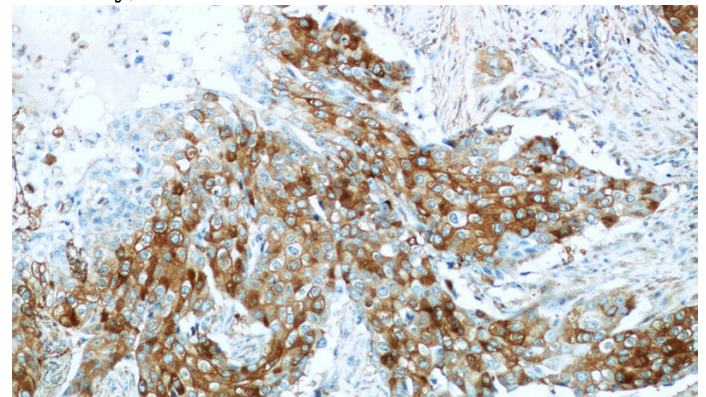
WB: 1:500-1:5000

IHC: 1:20-1:200

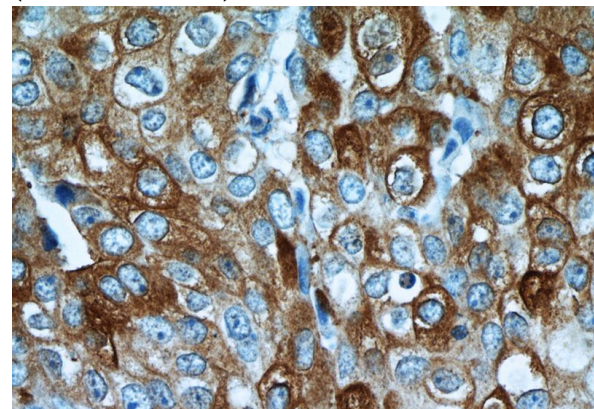
Validations



K-562 cells were subjected to SDS PAGE followed by western blot with Catalog No:114787(ROR1 antibody) at dilution of 1:500



Immunohistochemistry of paraffin-embedded human breast cancer tissue slide using Catalog No:114787(ROR1 Antibody) at dilution of 1:50 (under 10x lens)



Immunohistochemistry of paraffin-embedded human breast cancer tissue slide using Catalog No:114787(ROR1 Antibody) at dilution of 1:50 (under 40x lens)