

# MMP13 Polyclonal Antibody



Catalog Number: 163787

## Product name

MMP13 Polyclonal Antibody

## Specificity

Human

## Antibody description

Polyclonal antibody to MMP13

## Preparation

Antigen: A synthetic peptide of human MMP13

## Formulation

PBS with 0.02% sodium azide, pH7.3.

## Storage

Store at 4°C (regular) or -20°C (long term). Avoid freeze / thaw cycles.

## Clonality

Polyclonal

## Ig Type

Rabbit IgG

## Applications

WB, IHC, IF

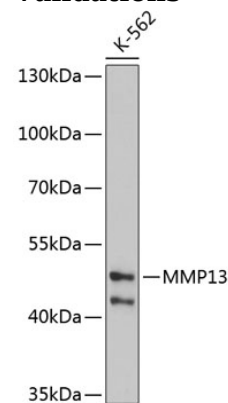
## Dilutions

WB 1:500 - 1:1000

IHC 1:50 - 1:100

IF 1:50 - 1:200

## Validations



Western blot - MMP13 Polyclonal Antibody

Western blot analysis of extracts of K-562 cells, using MMP13 antibody at 1:1000 dilution. Secondary antibody: HRP Goat Anti-Rabbit IgG (H+L) at 1:10000 dilution. Lysates/proteins: 25ug per lane. Blocking buffer: 3% nonfat dry milk in TBST. Detection: ECL Enhanced Kit. Exposure time: 90s.