

General Information

Gene Name Synonym

CD200 cell surface glycoprotein receptor-like 2;
CD200 cell surface glycoprotein receptor-like a;
Cell surface glycoprotein CD200 receptor 1-like;
Cell surface glycoprotein OX2 receptor 2

Protein Construction

A DNA sequence encoding the human CD200R1L (AAT00538.1) extracellular domain (Met1-Leu239) was expressed, fused with a polyhistidine tag at the C-terminus.

Organism

Human

Expression Host

Human Cells

QC Testing

Purity

> 95 % as determined by SDS-PAGE

Endotoxin

< 1.0 EU per μg of the protein as determined by the LAL method

Stability

Samples are stable for up to twelve months from date of receipt at -70°C

Predicted N terminal

Gly 24

Molecular Mass

The recombinant human CD200R1L consists of 227 amino acids and predicts a molecular mass of 25.2 kDa. In SDS-PAGE under reducing conditions, the apparent molecular mass of rh CD200R1L is approximately 45-60 kDa due to glycosylation.

Formulation

Lyophilized from sterile PBS, pH 7.4

1. 5 % trehalose and mannitol are added as protectants before lyophilization.

2. Please contact us for any concerns or special requirements.

Usage Guide

Storage

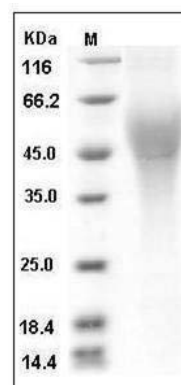
Store it under sterile conditions at -20°C to -80°C .

It is recommended that the protein be aliquoted for optimal storage. Avoid repeated freeze-thaw cycles.

Reconstitution

Adding sterile water, prepare a stock solution of 0.25 mg/ml. Concentration is measured by UV-Vis.

SDS-PAGE



Human CD200R1L / CD200R2 / CD200RLa Protein (His Tag) SDS-PAGE