

# BCL10 antibody

Catalog Number: 108387

## Product name

BCL10 antibody

## Specificity

human, mouse; other species not tested.

## Antibody description

BCL10 Rabbit Polyclonal antibody. Positive WB detected in mouse ovary tissue, human ovary cancer. Positive IHC detected in human lung cancer. Observed molecular weight by Western-blot: 32kd

## Preparation

This antibody was obtained by immunization of BCL10 recombinant protein (Accession Number: NM\_003921). Purification method: Antigen affinity purified.

## Formulation

PBS with 0.1% sodium azide and 50% glycerol pH 7.3.

## Storage

Store at -20°C. DO NOT ALIQUOT

## Clonality

Polyclonal

## Ig Type

Rabbit IgG

## Applications

ELISA, WB, IHC

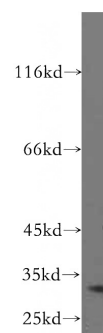
## Dilutions

Recommended Dilution:

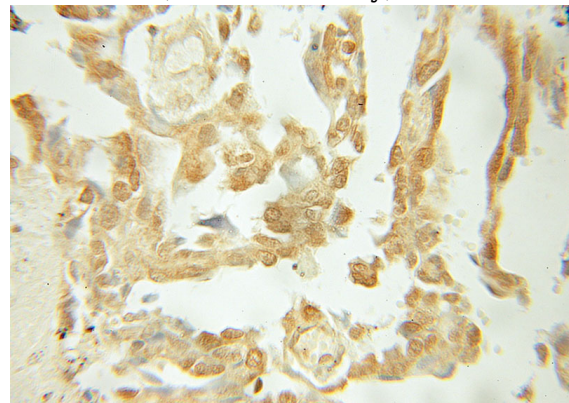
WB: 1:200-1:2000

IHC: 1:20-1:200

## Validations



mouse ovary tissue were subjected to SDS PAGE followed by western blot with Catalog No:108387(BCL10 antibody) at dilution of 1:500



Immunohistochemical of paraffin-embedded human lung cancer using Catalog No:108387(BCL10 antibody) at dilution of 1:50 (under 40x lens)