

# SMCR7L/MID51 antibody



Catalog Number: 115387

## Product name

SMCR7L/MID51 antibody

## Immunogen

[Human SMCR7L Recombinant protein \(His tag\)](#)

## Specificity

Human, Mouse, Rat; other species not tested.

## Antibody description

SMCR7L/MID51 Rabbit Polyclonal antibody. Positive WB detected in HT-1080 cells, mouse heart tissue, mouse testis tissue, NIH/3T3 cells, rat liver tissue, rat testis tissue, RAW264.7 cells. Positive IP detected in RAW 264.7 cells. Positive IF detected in Hela cells. Observed molecular weight by Western-blot: 48-51 kDa

## Preparation

This antibody was obtained by immunization of SMCR7L/MID51 recombinant protein (Accession Number: BC002587). Purification method: Antigen affinity purified.

## Formulation

PBS with 0.02% sodium azide and 50% glycerol pH 7.3.

## Storage

Store at -20°C. DO NOT ALIQUOT

## Clonality

Polyclonal

## Ig Type

Rabbit IgG

## Applications

ELISA, WB, IF, IP

## Dilutions

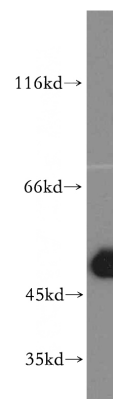
Recommended Dilution:

WB: 1:500-1:5000

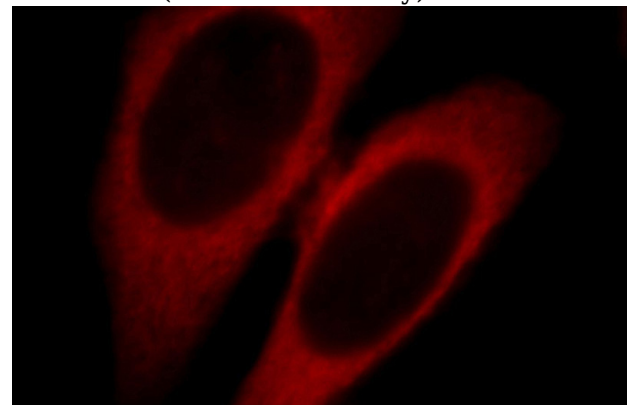
IP: 1:500-1:5000

IF: 1:10-1:100

## Validations



HT-1080 cells were subjected to SDS PAGE followed by western blot with Catalog No:115387(SMCR7L antibody) at dilution of 1:400



Immunofluorescent analysis of Hela cells, using SMCR7L antibody Catalog No:115387 at 1:25 dilution and Rhodamine-labeled goat anti-rabbit

# SMCR7L/MID51 antibody

Catalog Number: 115387

---

IP Result of anti-SMCR7L (IP:Catalog No:115387, 3ug; Detection:Catalog No:115387 1:1000) with RAW 264.7 cells lysate 2400ug.

