

Anti-Drd5 antibody

Catalog Number: 175387

Product name

Anti-Drd5 antibody

Specificity

Human, Mouse, Rat

Antibody description

Rabbit polyclonal antibody to Drd5

Preparation

This antigen of this antibody was klh conjugated synthetic peptide derived from rat drd5 251-350/475

Formulation

Liquid, 0.01M TBS(pH7.4) with 1% BSA, 0.03% Proclin300 and 50% Glycerol.

Storage

Store at -20°C for one year. Avoid repeated freeze/thaw cycles. The lyophilized antibody is stable at room temperature for at least one month and for greater than a year when kept at -20°C. When reconstituted in sterile pH 7.4 0.01M PBS or diluent of antibody the antibody is stable for at least two weeks at 2-4°C.

Clonality

Polyclonal

Ig Type

Rabbit IgG

Applications

WB, FC

Dilutions

WB:1:500-2000

FC:1µg /test

Validations

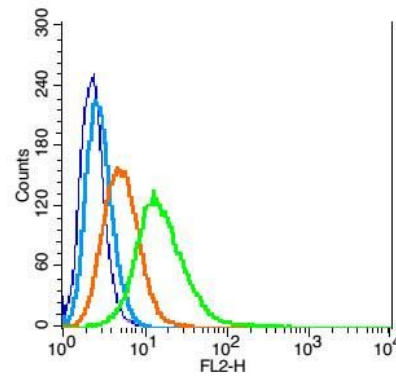
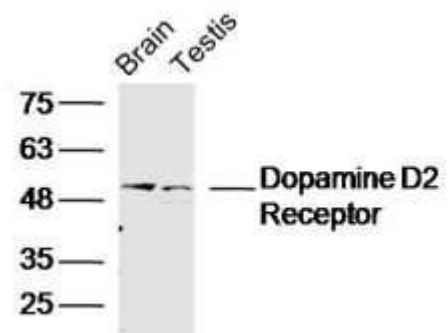


Fig1: Blank control: RSC96(blue).; Primary Antibody:Rabbit Anti- DRD5 antibody , Dilution: 1µg in 100 µL 1X PBS containing 0.5% BSA;; Isotype Control Antibody: Rabbit IgG(orange) ,used under the same conditions);; Secondary Antibody: Goat anti-rabbit IgG-PE(white blue), Dilution: 1:200 in 1 X PBS containing 0.5% BSA.; Protocol; The cells were fixed with 2% paraformaldehyde (10 min) . Antibody (1µg /1x10⁶ cells) were incubated for 30 min on the ice, followed by 1 X PBS containing 0.5% BSA + 1 0% goat serum (15 min) to block non-specific protein-protein interactions. Then the Goat Anti-rabbit IgG/PE antibody was added into the blocking buffer mentioned above to react with the primary antibody of 175387# at 1/200 dilution for 30 min on ice. Acquisition of 20,000 events was



performed.

Fig2: Sample.; Brain (Mouse) Lysate at 40 ug; Testis (Mouse) Lysate at 40 ug; Primary: Anti-Dopamine D5 receptor at 1/300 dilution; Secondary: IRDye800CW Goat Anti-Rabbit IgG at 1/20000 dilution; Predicted band size: 53kD; Observed band size: 53kD