

Anti-ENO2 antibody



Catalog Number: 105387

Product name

Anti-ENO2 antibody

WB: 10-30 µg/mL

IHC-P: 0.1-1 µg/mL

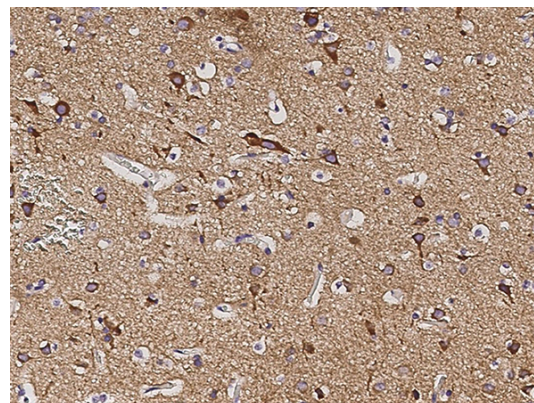
Specificity

Human ENO2

Validations

Antibody description

Rabbit polyclonal to ENO2



Preparation

Produced in rabbits immunized with A synthetic peptide corresponding to the N-terminus of the human NSE(Gamma-enolase) , and purified by antigen affinity chromatography.

NSE(Gamma-enolase) Antibody, Rabbit PAb, Antigen Affinity Purified, Immunohistochemistry

Formulation

0.2 µm filtered solution in PBS

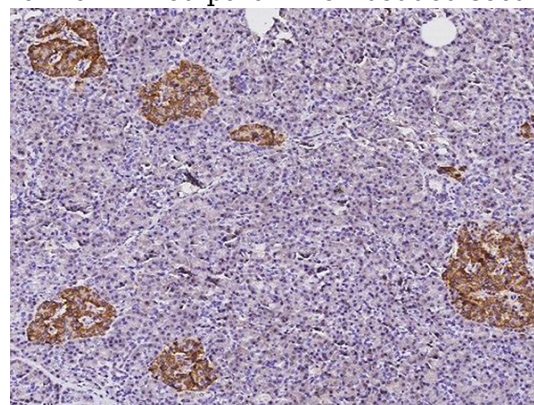
Immunochemical staining of human NSE in human brain with rabbit polyclonal antibody (0.5 µg/mL, formalin-fixed paraffin embedded sections).

Storage

This antibody can be stored at 2°C-8°C for one month without detectable loss of activity. Antibody products are stable for twelve months from date of receipt when stored at -20°C to -80°C.

Preservative-Free.

Sodium azide is recommended to avoid contamination (final concentration 0.05%-0.1%). It is toxic to cells and should be disposed of properly. Avoid repeated freeze-thaw cycles.



NSE(Gamma-enolase) Antibody, Rabbit PAb, Antigen Affinity Purified, Immunohistochemistry

Clonality

Polyclonal

Ig Type

Rabbit IgG

Immunochemical staining of human NSE in human pancreas with rabbit polyclonal antibody (0.5 µg/mL, formalin-fixed paraffin embedded

Applications

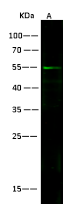
WB, IHC-P

Dilutions

Anti-ENO2 antibody



Catalog Number: 105387



NSE(Gamma-enolase) Antibody, Rabbit PAb,
Antigen Affinity Purified, Western blot

Items	Lanes
Sample (whole cell lysate)	A HepG2
Sample Volume (µg/lane)	30
Gel	13% SDS-PAGE reducing gel
Recommended Concentration	10-30 µg/ml
Secondary Antibody	DyLight 800 labeled Antibody to Rabbit IgG (H+L), at 1:5000 dilution. Developed using Odyssey imaging system.
Explanation	Predicted band size : 47 kDa Observed band size : 55 kDa

sections).