

# CYP24A1 antibody



Catalog Number: 109687

## Product name

CYP24A1 antibody

IP: 1:200-1:1000

IHC: 1:20-1:200

## Specificity

Human, Mouse, Rat; other species not tested.

## Antibody description

CYP24A1 Rabbit Polyclonal antibody. Positive IP detected in HeLa cells. Positive WB detected in HeLa cells, A549 cells. Positive IHC detected in human kidney tissue, human prostate cancer tissue. Observed molecular weight by Western-blot: 54-59 kDa

## Preparation

This antibody was obtained by immunization of CYP24A1 recombinant protein (Accession Number: XM\_047439936). Purification method: Antigen affinity purified.

## Formulation

PBS with 0.1% sodium azide and 50% glycerol pH 7.3.

## Storage

Store at -20°C. DO NOT ALIQUOT

## Clonality

Polyclonal

## Ig Type

Rabbit IgG

## Applications

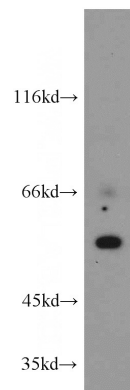
ELISA, WB, IHC, IP

## Dilutions

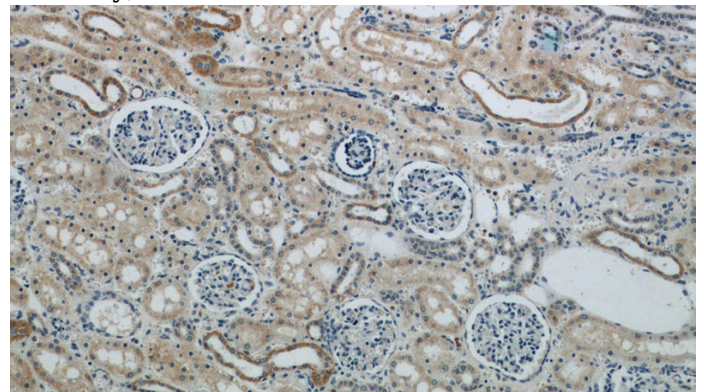
Recommended Dilution:

WB: 1:200-1:2000

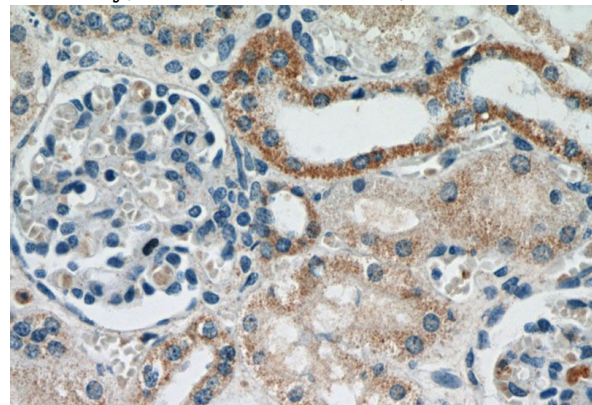
## Validations



HeLa cells were subjected to SDS PAGE followed by western blot with Catalog No:109687(CYP24A1 antibody) at dilution of 1:300



Immunohistochemical of paraffin-embedded human kidney using Catalog No:109687(CYP24A1 antibody) at dilution of 1:50 (under 10x lens)



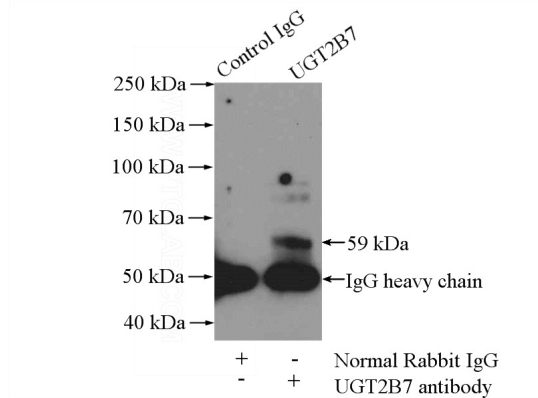
Immunohistochemical of paraffin-embedded human kidney using Catalog No:109687(CYP24A1

# CYP24A1 antibody

Catalog Number: 109687

---

antibody) at dilution of 1:50 (under 40x lens)



IP Result of anti-CYP24A1 (IP:Catalog No:109687, 4ug; Detection:Catalog No:109687 1:300) with HeLa cells lysate 2800ug.