

Rhesus EphA4/Eph Receptor A4 (Fc Tag) recombinant protein



Catalog Number: 504687

General Information

Protein Construction

A DNA sequence encoding the rhesus EPHA4 (NP_001247799.1) (Met1-Thr547) was expressed, fused with the Fc region of human IgG1 at the C-terminus.

Organism

Rhesus

Expression Host

Human Cells

QC Testing

Activity

Measured by its binding ability in a functional ELISA.

Immobilized Rhesus EPHA4 (Cat:504687) at 10 µg/mL (100 µl/well) can bind biotinylated Rhesus EFNA5-Fc (Cat:503339). The EC₅₀ of biotinylated Rhesus EFNA5-Fc is 14.4-33.6 ng/mL.

Purity

> 96 % as determined by SDS-PAGE

Endotoxin

< 1.0 EU per µg of the protein as determined by the LAL method

Stability

Samples are stable for up to twelve months from date of receipt at -70°C

Predicted N terminal

Val 20

Molecular Mass

The recombinant rhesus EPHA4 comprises 769 amino acids and has a calculated molecular mass of 85.4KDa.

Formulation

Lyophilized from sterile PBS, pH 7.4

1. 5 % trehalose and mannitol are added as protectants before lyophilization.

2. Please contact us for any concerns or special requirements.

Usage Guide

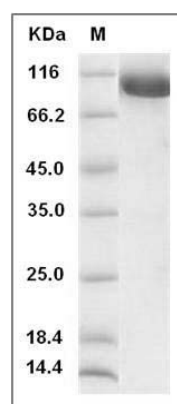
Storage

Store it under sterile conditions at -20°C to -80°C. It is recommended that the protein be aliquoted for optimal storage. Avoid repeated freeze-thaw cycles.

Reconstitution

Adding sterile water, prepare a stock solution of 0.25 mg/ml. Concentration is measured by UV-Vis.

SDS-PAGE



Cynomolgus EphA4 Protein (Fc Tag) SDS-PAGE